

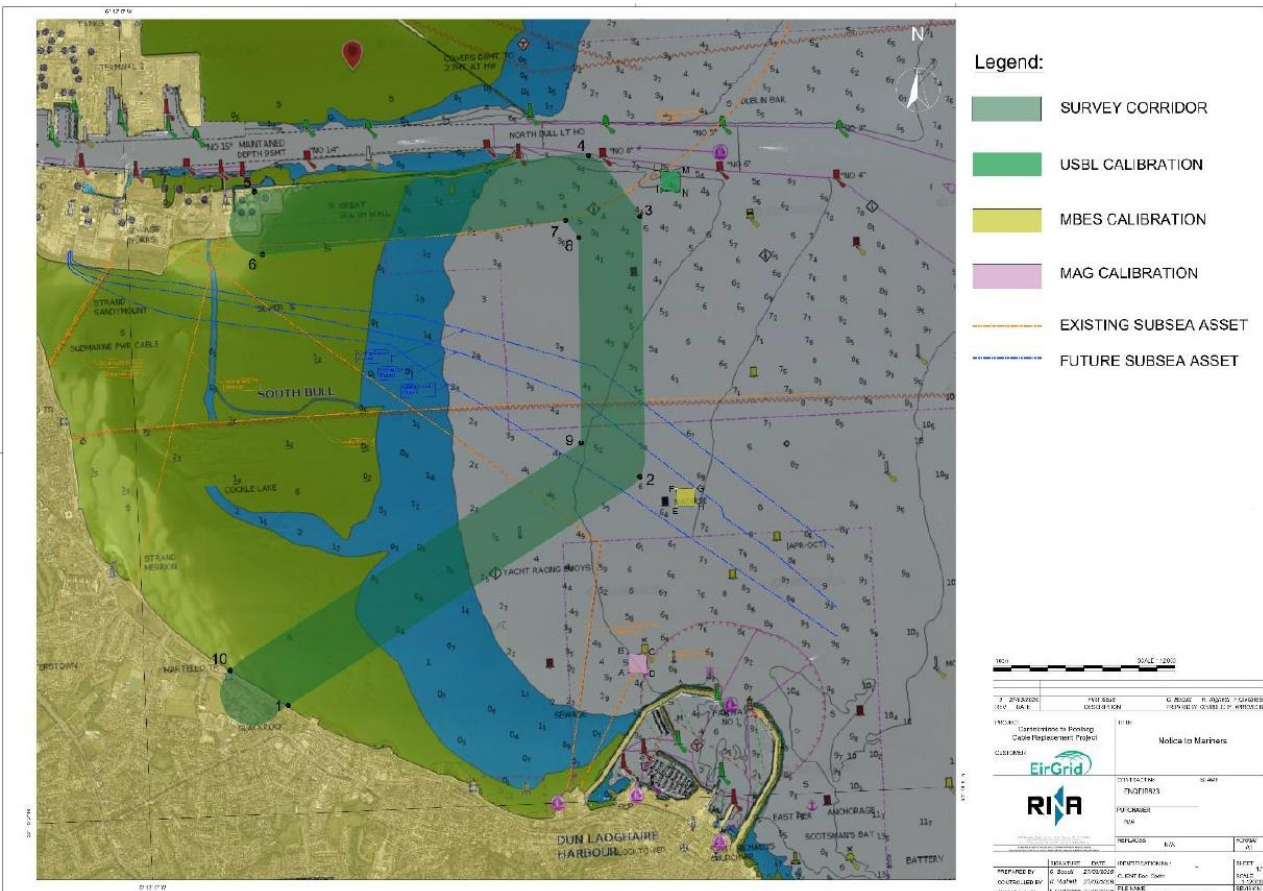
NOTICE TO MARINERS

Survey Operations - EirGrid

Masters, Warranted Pilots, Holders of Pilotage Exemption Certificates, Owners, Operators and Agents of all Vessels navigating within Dublin Port are hereby notified that Green Rebel Marine working on behalf of RINA Consulting and EirGrid will be conducting marine surveys and site investigation works as part of the Carrickmines to Poolbeg Cable Replacement Project.

Operations are scheduled to commence on 15 April 2026 and will continue for approximately 45 days. All operations will be limited to daylight hours and are subject to suitable weather and operational conditions.

The survey area is located in the western part of Dublin Bay, to the south of the Great South Wall and west of Dún Laoghaire Harbour as indicated on the chart extract below;



Captain Michael McKenna | Harbour Master | 01 April 2026

Masters, owners, agents, charterers, marinas, yacht clubs and recreational boaters should ensure that the contents of this notice are made known to the persons in charge of their vessels or craft. All notices to mariners can be found at www.dublinport.ie/information-centre/notice-to-mariners/



Dublin SafePort

Enhancing safety culture and practice, port-wide.

The survey area is bound by the following waypoints;

WP	Lat	Long
1	53°18'15"N	006°10'54"W
2	53°19'10"N	006°8'20"W
3	53°20'16"N	006°8'16"W
4	53°20'32"N	006°8'36"W
5	53°20'27"N	006°11'00"W
6	53°20'11"N	006°10'57"W
7	53°20'16"N	006°8'47"W
8	53°20'12"N	006°8'42"W
9	53°19'19"N	006°8'45"W
10	53°18'25"N	006°11'18"W

The following craft will be engaged in survey operations;

Vessel	Role	Length x Breadth x Draft (m)
LADY KATHLEEN	Survey Vessel	14 x 5 x 1.4

All craft will maintain a continuous listening watch on VHF Channel 12 and will display the appropriate lights and shapes as required under the International Regulations for Preventing Collisions at Sea.

All vessels navigating in the vicinity are requested to; navigate with caution when transiting survey area, maintain a safe distance from the survey vessel and associated equipment, to pass at slow speed and to make due allowance for survey operations and the restricted manoeuvrability of vessels engaged in such works.

Dublin Port VTS will promulgate relevant navigational information and traffic updates on VHF Channel 12.