

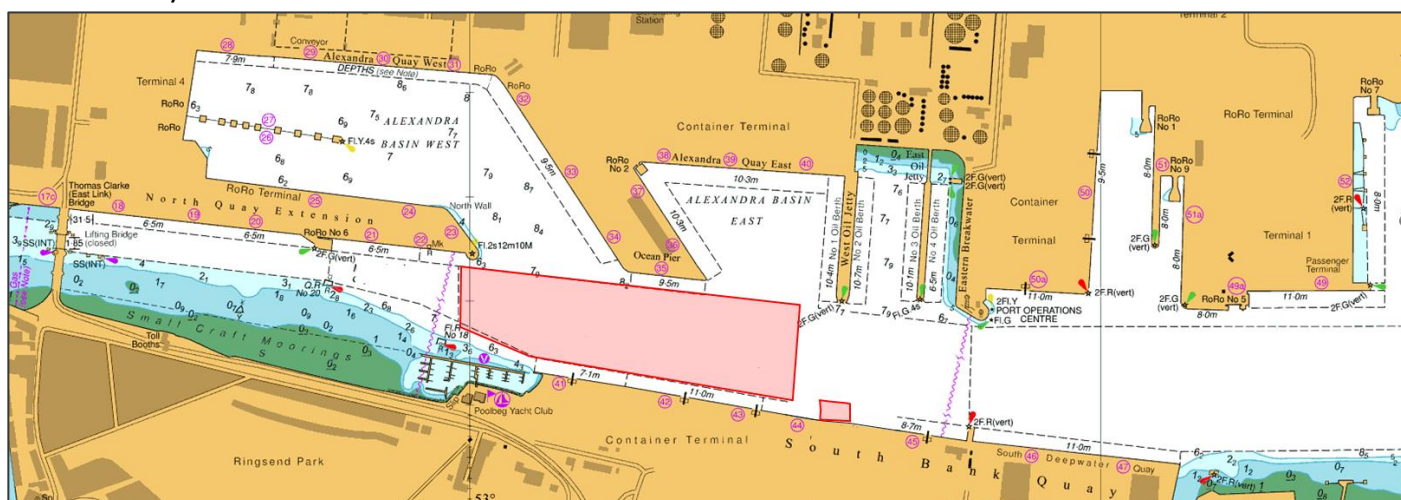
NOTICE TO MARINERS

Dredging Operations

Masters, Warranted Pilots, Holders of Pilotage Exemption Certificates, Owners, Operators and Agents of all Vessels navigating within Dublin Port are hereby notified that Dublin Port Company, in conjunction with Boskalis, will undertake a scheduled dredging campaign within port limits.

The dredging campaign will be conducted from 09 February 2026 to 06 March 2026.

Dredging works will take place in the following areas, with the craft transiting to/from the Spoil Ground in Dublin Bay:



Extract of BA1447 with works area indicated. Not for Navigation © Crown Copyright. Reproduced by permission of the Controller of His Majesty's Stationery Office and the UK Hydrographic Office www.GOV.UK/UKHO

The following craft will be engaged in dredging operations;

Vessel	Role	Length x Breadth x Draft (m)
Shoalway	Trailing Suction Hopper Dredger	90.0 x 19.0 x 6.8
Odin	Backhoe Dredger	60.0 x 18.0 x 4.0
Siskin	Tug	27.0 x 9.1 x 2.7
Union Onyx	Tug	33.0 x 11.0 x 4.4
Terraferre 501-502	Transfer Hopper Barge	94.3 x 16.5 x 5.5

Captain Michael McKenna | Harbour Master | 06 February 2026

Masters, owners, agents, charterers, marinas, yacht clubs and recreational boaters should ensure that the contents of this notice are made known to the persons in charge of their vessels or craft. All notices to mariners can be found at www.dublinport.ie/information-centre/notice-to-mariners/



**Dublin
SafePort**

Enhancing
safety culture
and practice,
port-wide.

All craft will maintain a continuous listening watch on VHF Channel 12 and will display the appropriate lights and shapes as required under the International Regulations for Preventing Collisions at Sea.

All vessels are requested to navigate with caution when transiting dredging areas, to pass at slow speed, and to make due allowance for dredging operations and the restricted manoeuvrability of vessels engaged in such works.

Dublin Port VTS will promulgate relevant navigational information and traffic updates on VHF Channel 12.

