

NOTICE TO MARINERS

Great South Wall – Rock Armour Works

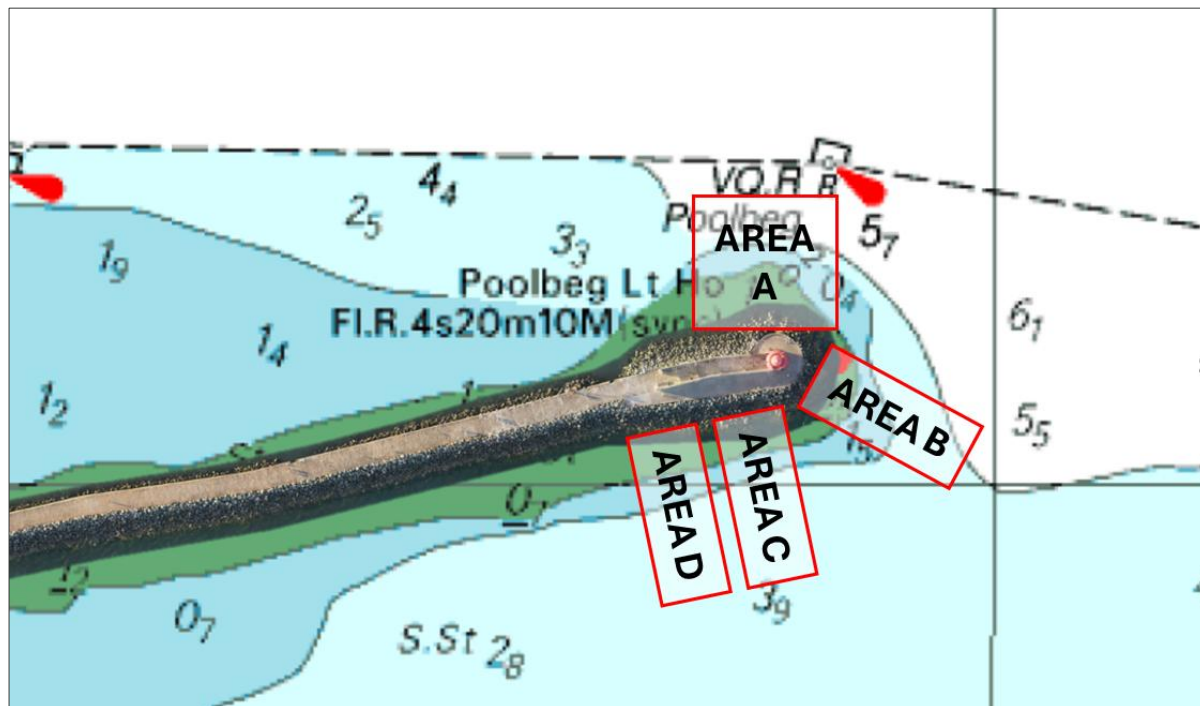
Masters, Warranted Pilots, Holders of Pilotage Exemption Certificates, and Owners, Operators, and Agents of all vessels navigating within Dublin Port are hereby notified that, commencing on or about 29 January (subject to weather) for a period of approximately five weeks, works will be carried out to replace rock armour around the Great South Wall and Poolbeg Lighthouse.

The following vessels are involved in the works;

Katie Lou	Support Tug	22.5m x 7.3m x 3.0m
Chloe May	Support Tug	22.4m x 8.6m x 2.0m
Dinopotes	Spud Leg Barge	37.5m x 15.0m x 2.2m
Aarsleff 120	Rock Barge	70.0m x 20.0m x 2.4m
Aquatay	Survey Vessel	11.8m x 3.8m x 1.1m

All vessels will maintain a listening watch on VHF Channel 12, display the required lights and shapes, and are fitted with AIS.

Works will take place, south of the fairway, in four areas around the Great South Wall, as indicated on the chart extract;



Extract of BA1447 with photo overlay and works area indicated. Not for Navigation © Crown Copyright. Reproduced by permission of the Controller of His Majesty's Stationery Office and the UK Hydrographic Office www.GOV.uk/UKHO

Captain Michael McKenna | Harbour Master | 23 January 2026

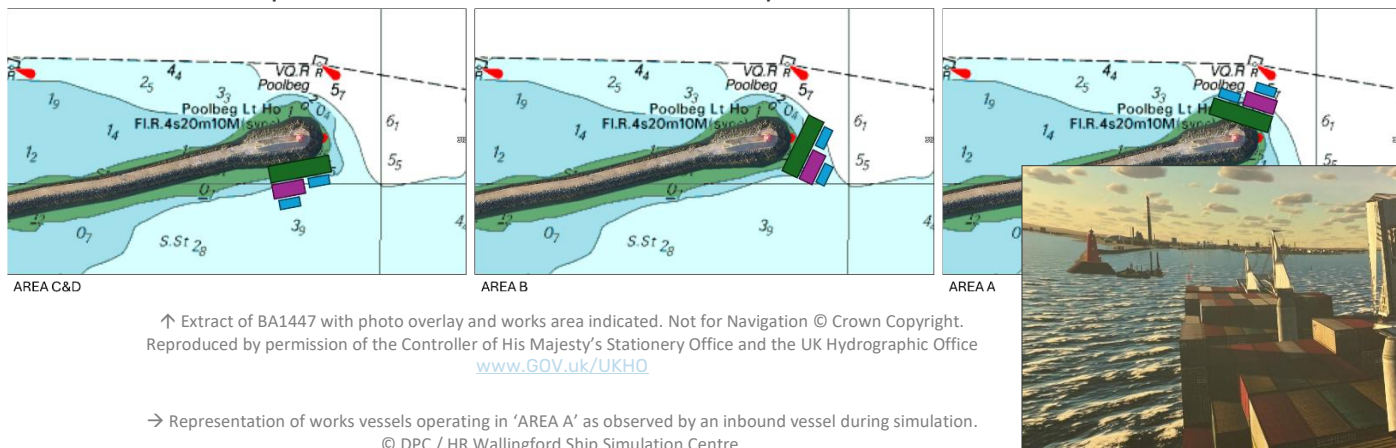
Masters, owners, agents, charterers, marinas, yacht clubs and recreational boaters should ensure that the contents of this notice are made known to the persons in charge of their vessels or craft. All notices to mariners can be found at www.dublinport.ie/information-centre/notice-to-mariners/



**Dublin
SafePort**

Enhancing
safety culture
and practice,
port-wide.

Works vessels will operate in various orientations as they move between the work areas:



Works will be limited to daylight hours, overnight the vessels will relocate to 'AREA D' on the south side of the Great South Wall. During periods of inclement weather or strong winds the vessels will be removed from the work site and berthed within the Port. The work vessels will be manned throughout the works.

During the course of the works vessels are prohibited from meeting or overtaking within the constrained section of the channel between Buoys Nos. 5&6 and Nos. 9&10, Notice to Mariners 2.1-2026 has been updated to reflect this temporary restriction.



All vessels navigating in the vicinity of the works are requested to proceed at a safe speed and to give due consideration to the operations and restricted manoeuvrability of the vessels involved. Dublin Port VTS will provide updates and advise vessels of any relevant information.

Pedestrian access to the Poolbeg Lighthouse and the eastern end of the Great South Wall will be restricted for the duration of the works.

Emergency Scenarios

When vessels are approaching the lights, whether inbound or outbound, and an emergency situation arises such as an engine or steering failure; where the vessel cannot maintain course, a warning signal of five or more short and rapid blasts, shall be sounded in accordance with the COLREGS. This is to give personnel additional time to evacuate from the work vessels/area, should risk of collision exist.

The sound signals will be accompanied by the usual communication protocols to VTS Ch12.



This Notice to Mariners may be updated as the works progress.