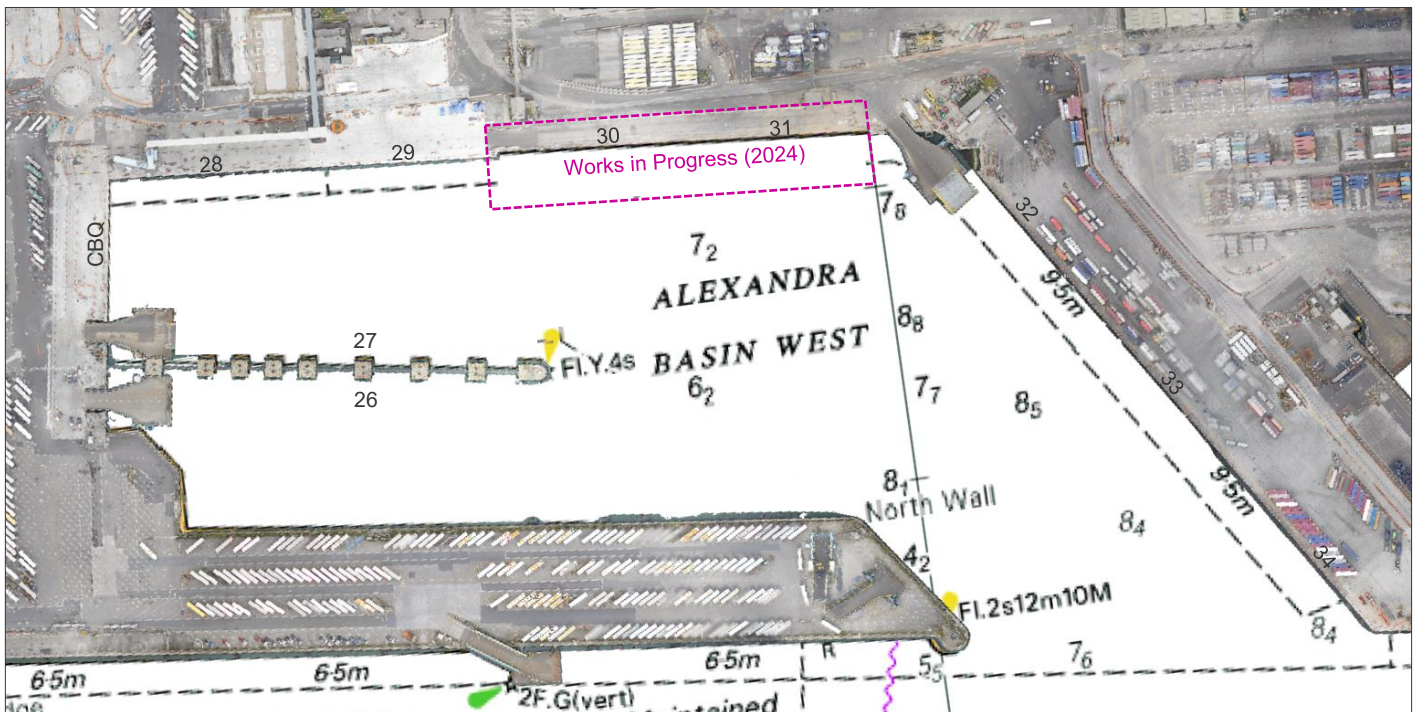


# NOTICE TO MARINERS

## Berth 30 & 31 – Works in Progress

Masters, Warranted Pilots, Holders of Pilotage Exemption Certificates, Owners, Operators and Agents of all Vessels navigating within Dublin Port are hereby notified that to facilitate construction work Berth 30 and 31 on the north side of Alexandra Basin West will be closed to shipping. The closure will be in place from 21 October 2024 for a period of approximately 24 months.



Extract of BA1447 with DPC edits and drone overlay Not for Navigation © Crown Copyright. Reproduced by permission of the Controller of His Majesty's Stationery Office and the UK Hydrographic Office [www.GOV.uk/UKHO](http://www.GOV.uk/UKHO)

Access to berths 28 and 29 will be maintained throughout the construction works, limited to 200m LOA and an appropriate draft.

VTs will keep all vessels updated and advised of any relevant information.

**Captain Michael McKenna** | Harbour Master | 01 January 2026

Masters, owners, agents, charterers, marinas, yacht clubs and recreational boaters should ensure that the contents of this notice are made known to the persons in charge of their vessels or craft. All notices to mariners can be found at [www.dublinport.ie/information-centre/notice-to-mariners/](http://www.dublinport.ie/information-centre/notice-to-mariners/)



**Dublin  
SafePort**

Enhancing  
safety culture  
and practice,  
port-wide.