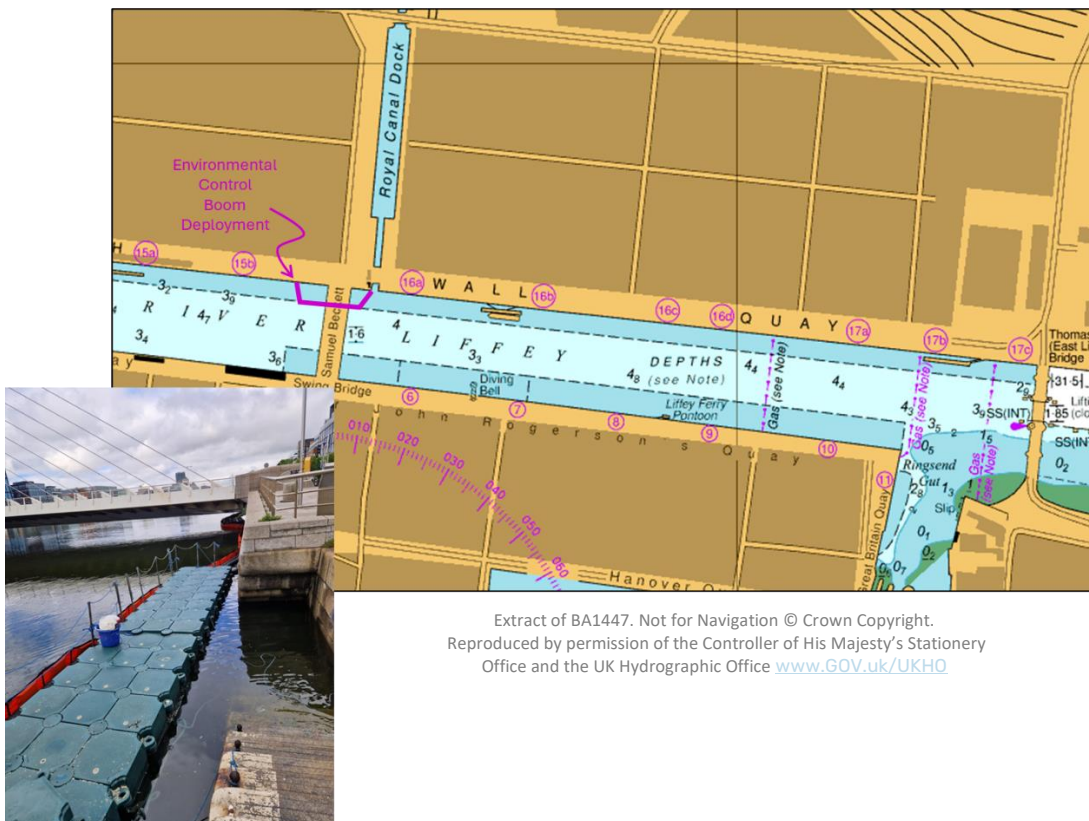


# NOTICE TO MARINERS

## Environmental Control Boom

Masters, Warranted Pilots, Holders of Pilotage Exemption Certificates, Owners, Operators and Agents of all Vessels navigating within Dublin Port are hereby notified that an Environmental Control Boom and Pontoons have been temporarily deployed along North Wall Quay, on the north side of the river Liffey. The boom extends from the west side of the Samuel Beckett Bridge, passes underneath the bridge, and continues eastward by way of the entrance to Spencer Dock and the Royal Canal.



Extract of BA1447. Not for Navigation © Crown Copyright.  
Reproduced by permission of the Controller of His Majesty's Stationery  
Office and the UK Hydrographic Office [www.GOV.uk/UKHO](http://www.GOV.uk/UKHO)

This deployment is a precautionary environmental protection measure in response to a third-party incident unrelated to Dublin Port operations.

Mariners are requested to navigate with caution in the vicinity and keep well clear of the boom.

**Captain Michael McKenna** | Harbour Master 03 July 2025

Masters, owners, agents, charterers, marinas, yacht clubs and recreational boaters should ensure that the contents of this notice are made known to the persons in charge of their vessels or craft. All notices to mariners can be found at [www.dublinport.ie/information-centre/notice-to-mariners/](http://www.dublinport.ie/information-centre/notice-to-mariners/)



**Dublin  
SafePort**

Enhancing  
safety culture  
and practice,  
port-wide.