

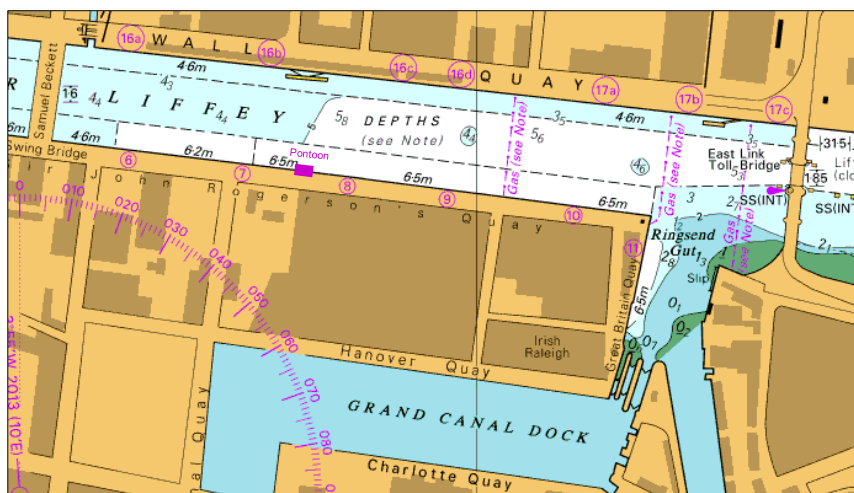
## Sir John Rogersons Quay – Liffey Ferry Pontoon

Mariners are advised that a floating pontoon and gangway is in position on Sir John Rogersons Quay.

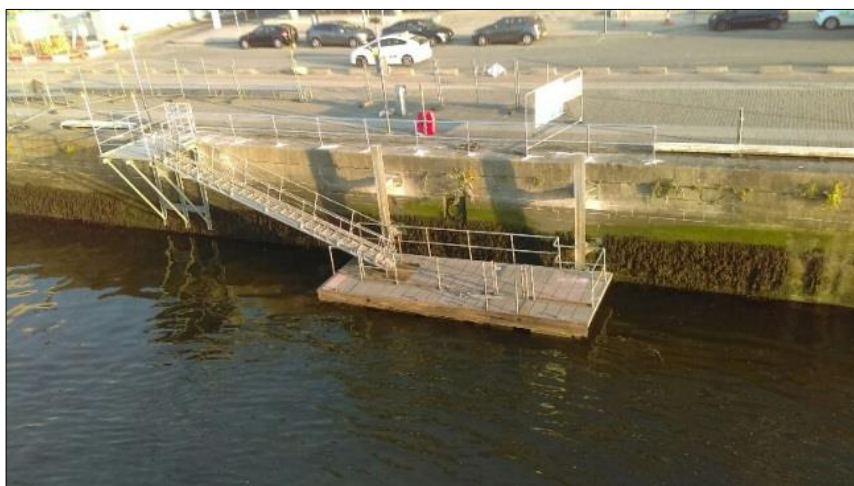
The pontoon measures 9m x 3.2m and is centered in position 53°20.753'N 006°14.083'W.

A gangway measuring 10m x 0.9m connects to the eastern edge of the pontoon and runs up to a platform on the quay wall.

The Pontoon is not for public landing.



Extract of BA1447 Not For Navigation © Crown Copyright. Reproduced by permission of the Controller of His Majesty's Stationery Office and the UK Hydrographic Office [www.GOV.UK/UKHO](http://www.GOV.UK/UKHO)



Photograph of pontoon in situ, looking south east

Captain Michael McKenna | Harbour Master | 01 January 2024

Masters, owners, agents, charterers, marinas, yacht clubs and recreational boaters should ensure that the contents of this notice are made known to the persons in charge of their vessels or craft. All notices to mariners can be found at [www.dublinport.ie/information-centre/notice-to-mariners/](http://www.dublinport.ie/information-centre/notice-to-mariners/)



Dublin  
SafePort

Enhancing  
safety culture  
and practice,  
port-wide.