

the
PUNPHOUSE
presents

5 PLAYS 5 WEEKS

FROM **FRIDAY, NOVEMBER 20TH**
TO **FRIDAY, DECEMBER 18TH**

**ALL PERFORMANCES
EXCLUSIVELY AT**


**[HTTPS://AXISBALLYMUN.
TICKETSOLVE.COM/SHOWS](https://axisballymun.ticketsolve.com/shows)**



**COMHLACHT CHALAFORT
ATHA CLIATH
DUBLIN PORT COMPANY**

the
PUMPHOUSE
 presents

**A Winter Festival of Plays
 commissioned by Dublin Port
 Company featuring work
 from axis Ballymun, ANU
 productions and Fishamble:
 The New Play Company.**



Five plays were filmed in the beautiful Pumphouse Building in Dublin Port during the Summer of 2020 they will now be premiered online over five Friday Nights culminating in a week-long festival of theatre in December 2020.

These shows will be available free of charge as a gift from Dublin Port in these strange times. But donations will be accepted towards a new artist development fund to be managed by axis Ballymun.

The Pumphouse Presents comprises five theatre pieces, new and previously staged, all recorded in the Victorian era Pumphouse which serviced the old graving dock.

It is presented over five weeks as the days darken and as the country continues to endure a pandemic. The five pieces are offered as a reminder of some of what we have temporarily had to forego and what we hope to be able to enjoy again once the days begin to lengthen. The pieces are also a statement of our intent to programme events in the new heritage zone based on Dublin and its port's rich heritage.

The Pumphouse Presents is a continuation of Dublin Port Company's commitment to integrate Dublin Port with Dublin City in a manner that will transform all of our experiences of the eastern end of our capital city. We hope you enjoy it.

Notes:

All premieres will be able to be booked through
<https://axisballymun.ticketsolve.com/shows>

All shows during Festival week to be booked through
<https://axisballymun.ticketsolve.com/products/>

Donations will also be able to be made when booking a ticket. Shows will premiere at 8pm on the night and be able to be viewed for 48 hours but must be booked before the 8pm premiere, they will then be unable to be viewed before the Festival in December.



the
PUNIPHOUSE
presents

CHARLIE'S A CLEPTO LEPER + CHIP SLICE, THE THIEF EMBARGO CANARIES

the —————
PUMPHOUSE
presents

Dublin Port is owned and operated by a State owned company with a commercial mandate to provide infrastructure for ships and cargo handling.

But the Port is much more than just a huge industrial estate one-third the size of the Phoenix Park where the paraphernalia of daily life is lifted on and off ships in steel boxes by enormous cranes.

INTRODUCTION

The Port was once the geographical hub of Dublin City where commerce and the daily lives of Dubliners mingled on the quays. But over the past one hundred and fifty years, as the City expanded and ships got bigger, the Port moved ever farther downriver into Dublin Bay and away from the sight and the consciousness of the city it served. Where the port was once both visible and essential, it is, today, largely invisible even if it remains just as essential to the City as it ever was.

We plan, by 2040, to bring Dublin Port to its ultimate capacity by completing a series of huge infrastructure projects. Dublin Port will then stop growing some 333 years after the first port authority, the Ballast Office Committee of Dublin Corporation, was established.

This final growth spurt cannot happen without support for the Port and there can only be support if Dublin Port is understood in all its facets particularly through its heritage. Frankly, the cargo statistics and financial data that describe the business of Dublin Port are not of much interest to most people.

Today's port authority is Dublin Port Company and, as part of our infrastructural development programme, we have set ourselves the objective of re-integrating the Port with the City.

To achieve this somewhat nebulous goal, we have completed projects such as the Diving Bell on Sir John Rogerson's Quay (2015) and the opening up of the Scott Tallon Walker designed Port Centre on East Wall Road (2017).





INTRODUCTION

We have also looked to artists to explore the links between the Port, the City and the River Liffey in music (*Starboard Home*, 2016), in the visual arts (through our *Port Perspectives* programme, 2017) and in theatre (Lee Coffey's *In Our Veins* and Dermot Bolger's *Last Orders at the Dockside*, 2019). And we have supported the publication of books about the Port, the City and the Bay notably *Dublin Bay Nature and History* by Richard Nairn, David Jeffrey and Rob Goodbody (2017) and *Dublin Moving East 1708-1844* by Michael Branagan (2020).

We are now entering a phase in the development of Dublin Port where we must pursue our re-integration objective with the same determination as we have been bringing to projects that increase the Port's capacity. The projects and arts initiatives we have completed in recent years convince us of the validity and merit of our effort to re-integrate the Port with the City.

The Pumphouse Presents comprises five theatre pieces, both new and previously staged, all recorded in the Victorian era Pumphouse which serviced the old graving dock. It is presented over five weeks as the days darken and as the country continues to endure a pandemic. The five pieces are offered as a reminder of some of what we have temporarily had to forego and what we hope to be able to enjoy again once the days begin to lengthen. The pieces are also a statement of our intent to programme events in the new heritage zone based on Dublin and its port's rich heritage.

The Pumphouse Presents is a continuation of Dublin Port Company's commitment to integrate Dublin Port with Dublin City in a manner that will transform all of our experiences of the eastern end of our capital city. We hope you enjoy it.

Eamonn O'Reilly
Chief Executive, Dublin Port Company

PLAY DATES

the
PUMPHOUSE
presents

FRIDAY NOVEMBER 20TH 8PM

CHARLIE'S A CLEPTO

BY CLARE MONNELLY
 PRESENTED BY AXIS BALLYMUN

FRIDAY NOVEMBER 27TH 8PM

LEPER + CHIP

BY LEE COFFEY
 PRESENTED BY AXIS BALLYMUN

FRIDAY DECEMBER 4TH 8PM

SLICE, THE THIEF

BY LEE COFFEY
 PRESENTED BY AXIS BALLYMUN

FRIDAY DECEMBER 11TH 8PM

EMBARGO

BY DEIRDRE KINAHAN
 PRESENTED BY FISHAMBLE: THE
 NEW PLAY COMPANY

FRIDAY DECEMBER 18TH 8PM

CANARIES

CREATED BY
 ANU PRODUCTIONS

DECEMBER 19TH – 23RD

**ALL PLAYS WILL BE
 AVAILABLE TO VIEW AS PART
 OF AN ONLINE FESTIVAL.**



the
PUNIPHOUSE
presents

FRIDAY NOVEMBER 20TH 8PM

CHARLIE'S A CLEPTO

BY CLARE MONNELLY
PRESENTED BY AXIS BALLYMUN

...“A truly unmissable show”..
The Irish Times

the
PUNPHOUSE
 presents

FRIDAY NOVEMBER 20TH 8PM

**CHARLIE'S
 A CLEPTO**

BY CLARE MONNELLY
 PRESENTED BY AXIS BALLYMUN

Charlie is a kleptomaniac - the doctor told her. Reckons it stems from childhood trauma. But she has the robbin' completely under control these days. For real. Yeah, she has a bit of a mouth on her, but she's only trying to be funny. Give everyone a laugh, not cause trouble, like.

Not today, of all days. See, there's a lot riding on these 24 hours...

Charlie loves that little boy more than she ever thought it was possible to love another human. And if she can only keep her head down and her mouth shut, she might just get him back.

Written and performed by Clare Monnelly
 directed by Aaron Monaghan
 original music by Derek Conaghy

15+ contains strong language

Originally produced for the stage by axis
 Ballymun

Nominated for Best New Play and Best Actress
 Irish Times Theatre Awards

Written and performed by Clare Monnelly
 Directed and Dramaturgy by Aaron
 Monaghan
 Designed by Suzie Cummins

Acknowledgements:

Suzie Cummins
Niamh McHugh
Niamh Ní Chonchubhair
Mark O'Brien
All the team at axis Ballymun
Irish Theatre Institute
Lee Coffey
Ger McNaughton
Dublin Port
Dublin Fringe
Smock Alley Theatre & Scene & Heard Festival
The Arts Council of Ireland
Dublin City Council
Media Coop
Bitter Like A Lemon
Seamus O'Rourke
The Monnelly Family



the
PUNIPHOUSE
presents

FRIDAY NOVEMBER 27TH 8PM

LEPER + CHIP

BY LEE COFFEY

PRESENTED BY AXIS BALLYMUN

*“Hilarious, fast-paced and deeply heartfelt.
A hugely promising first play”*

Mark O’Rowe


the
PUNPHOUSE
presents

FRIDAY NOVEMBER 27TH 8PM

LEPER + CHIP

BY LEE COFFEY

PRESENTED BY AXIS BALLYMUN



Boy meets girl...in the middle of a battering, boy wrecks bus full of pensioners, girl gets chased by machete-wielding maniac and love without madness isn't love at all.

Fast, frantic, funny... Dublin at 100mph with leopard-coated cougars, Pringle-eating whales and your tiny little mate chained inside a fridge. Blink and you'll miss it.

Written by Lee Coffey

Directed by Karl Shiels

Original Music by Derek Conaghy

Starring Amilia Stewart Keating and

Conall Keating

Associate-Directed by Laura Honan and

Lee Coffey

15+ contains strong language

Adapted from the critically acclaimed stage production of the same name, originally produced by Bitter Like A Lemon in association with Theatre Upstairs. Nominated for the National Student Drama Award and The Broadway Baby 5 Star Award. Originally designed by Laura Honan and Eoghan Carrick.

Acknowledgements:

Ger McNaughton

Tilestyle

Irish Theatre Institute

Dublin Port Company

Mark O'Brien

axis:Ballymun

Theatre Upstairs

Lanigan's Bar

Paul Stewart

Ciaran Keating

Media Coop



the
PUNIPHOUSE
presents

FRIDAY DECEMBER 4TH 8PM

SLICE, THE THIEF

BY LEE COFFEY

PRESENTED BY AXIS BALLYMUN

“What do you do when you fall off the bike?”

the
PUMPHOUSE
presents

FRIDAY DECEMBER 4TH 8PM

**SLICE,
 THE THIEF**

BY LEE COFFEY
 PRESENTED BY AXIS BALLYMUN

Slice, The Thief, has a huge scar on his stomach. That's how he got his name.

How'd it happen? He has no idea.

And today, it's the least of his worries.

Slice has stolen the wrong bike. He has 24 hours to get it back or he's dead.

The bike of his dreams leads to a day of nightmares and a whirlwind ride through the suburbs of Dublin at the speed of light - heart beating from out his chest - where his past, present and future will all collide.

Take what you want and it's bound to catch up with you.

Written by Lee Coffey
 Directed by Aaron Monaghan
 Starring John Cronin
 Original music by Derek Conaghy

18+ Strictly

This play contains very strong adult themes, language and terms which some may find offensive. Views expressed are solely those of the character.

Acknowledgements:

*Ger McNaughton
 Tilestyle
 Irish Theatre Institute
 Dublin City Council
 Arts Council of Ireland
 axis Ballymun
 Theatre Upstairs
 Smock Alley Theatre
 Dave McDonagh
 Fran Whelan
 Paul Whelan
 Wes Doyle
 Mark O'Brien
 Media Coop*



the
PUNIPHOUSE
presents

FRIDAY DECEMBER 11TH 8PM

ENIBARGO

BY DEIRDRE KINAHAN
PRESENTED BY FISHAMBLE:
THE NEW PLAY COMPANY

*"a fantastic performance in new
circumstances"*

President Michael D Higgins

*"A brave, strongly acted production from the
ever-reliable Fishamble"*

★★★★ Irish Times

the
PUNPHOUSE
presents

FRIDAY DECEMBER 11TH 8PM
EMBARGO

BY DEIRDRE KINAHAN
PRESENTED BY FISHAMBLE:
THE NEW PLAY COMPANY

Three souls caught up in the violent winds of change... In September 1920, during the War of Independence, dockers and railwaymen refused to transport any armed troops, or to handle any weapons arriving from Britain. On the centenary of this act of civil resistance, Fishamble staged *Embargo*, a site-responsive production by Deirdre Kinahan, in association with Iarnród Éireann and Dublin Port Company.

Embargo is a muddy, complicated, poetic, bloody, and heroic tale of a politically motivated industrial action, in which three characters deal with a pivotal moment during the Irish war of independence. These are our ghosts, their story is our story.

14+ Contains strong language and themes of suicide and death.

Written by Deirdre Kinahan
Directed by Maisie Lee

Cast

Callan Cummins as Jack
Matthew Malone as Gracie
Mary Murray as Jane
Produced by Eva Scanlan

Production:

Lighting & Set Design by Zia Bergin-Holly
Music & Sound Design by Denis Clohessy
Costume Design by Catherine Fay
Hair & Make Up by Val Sherlock
Production Manager Eoin Kilkenny
Stage Manager Steph Ryan
Assistant Stage Manager Sarah Purcell
Wardrobe Supervisor Catherine Connell
Dialect Coach Gavin O'Donoghue
Covid Officer Ronan Carey
Artistic Director Jim Culleton
Dramaturg Gavin Kostick
Production Coordinator Ronan Carey
Marketing Manager Chandrika Narayanan-Mohan
Chief LX Gary Maguire
Lighting Crew Suzie Cummins, Cillian McNamara
Sound Operator James Blake
Stage Crew Vincent Doherty, Hugh Roberts, Damien Woods
Set Construction Ger Clancy
Set Scenic Eugenia Genunchi
Production Support Production Services Ireland and One Louder Sound
Transport Trevor Price Ltd.
Press & Publicity by O'Doherty Communications
Graphic Design by Publicis
Promotional Photography by Mattieu Chardon
Production Photography by Anthony Woods
Filmed by Media Coop

Acknowledgements:

Dublin Port Company, Iarnród Éireann, The Arts Council, Dublin City Council, The Department of Tourism, Culture, Arts, Gaeltacht, Sport & Media and the National Library.



the
PUNIPHOUSE
presents

FRIDAY DECEMBER 18TH 8PM

CANARIES

CREATED BY
ANU PRODUCTIONS


Based on the history of the First World War
munitions factory located where Port Centre
is today.

the —————
PUNPHOUSE
 —————
presents

FRIDAY DECEMBER 18TH 8PM

CANARIES

CREATED BY
 ANU PRODUCTIONS



Canaries is a tender observation of the sacrifice and efforts of the Irish female munitions workers during World War 1, a story much less told. As well as the National Factory at Parkgate Street and Dublin Port, there were state-run munitions factories in Galway, Waterford and Cork employing 4,000 women. A further 5,000 people were employed by a factory in Arklow that manufactured 100 tons of cordite a week. CANARIES hopes to honour the Irish women who risked life and limb to supply ammunition to the frontline. Facing daily peril by handling explosive chemicals that carried the risk of them contracting potentially fatal diseases, amputation and even death. But for most, the effects of their work were immediately visible; a lurid shade of yellow that stained their skin and hair, earning them the nickname - CANARIES

A celebration of friendship and solidarity, CANARIES remembers these women and plays homage to their experiences.

Written & Directed by Louise Lowe

Cast

Mae: Aggi O'Casey

Florence: Eavan Gaffney

Creative

Sound Designer: Sinead Diskin

Set & props: Owen Boss

Costume: Maree Kearns

Dialect coach: Robbie O'Connor

Transport: Martin Finucane

Producer: Lynnette Moran and Matt Smyth

Line producer: Leanna Cuttle

Special thanks to

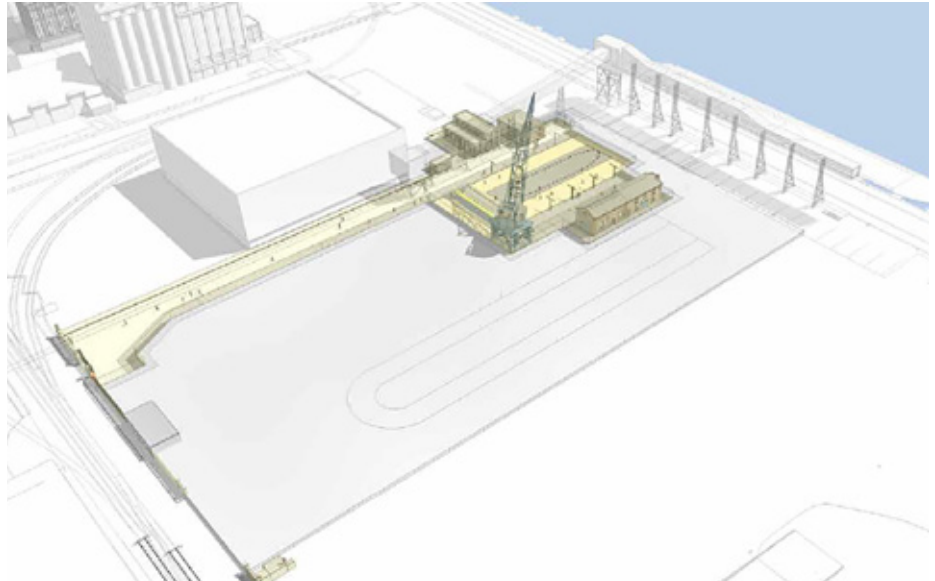
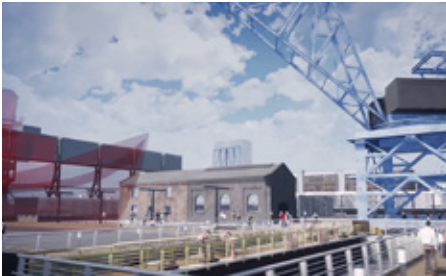
Dublin Port Company, The LIR National Academy of Dramatic Arts including Catherine Fay, Colm Carney and Bill Woodland.

FUTURE PLANS FOR THE PUMPHOUSE

the
PUMPHOUSE
presents

The Pumphouse Presents marks the commencement of works to create a two acre heritage zone on Alexandra Road. From March 2021, we intend to use this heritage zone to host exhibitions, events and performances

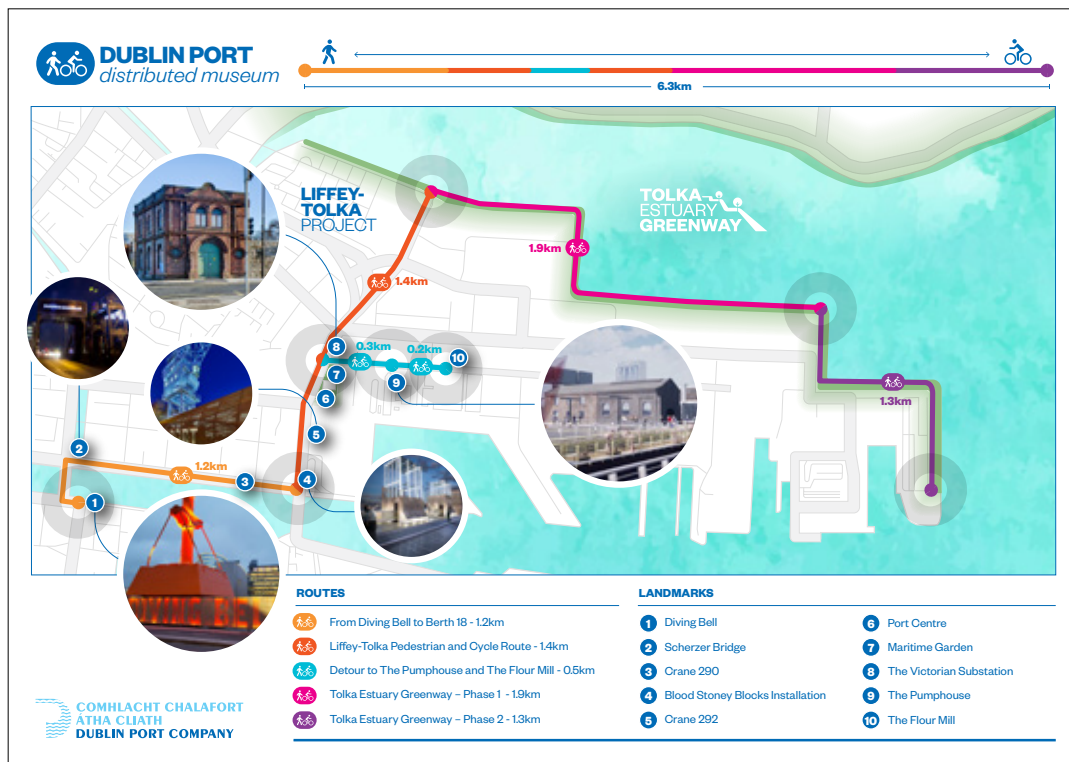
and to create a distinct and unique destination in the heart of the working port. This area will be expanded in a later phase in the coming years when the adjacent 1880's Graving Dock No. 1 is unearthed.



LIFFEY TO TOLKA PROJECT

17

Recently we have also launched our ambitious Liffey to Tolka project, the most important port city integration project to date providing 1.4km of civic space along East Wall Road. This is part of a wider Dublin Port initiative to create a distributed museum from the Diving Bell to the Port.





the —————
PUNIPHOUSE
————— *presents*

*Dublin Port Company would like to thank
Colin Hartford, Declan Sullivan - The PMO office,
John Coady & Tom Downes - Roadbridge,
PHC Department.*

**ALL PERFORMANCES
EXCLUSIVELY AT**

—————
**[HTTPS://AXISBALLYMUN.
TICKETSOLVE.COM/SHOWS](https://axisballymun.ticketsolve.com/shows)**

 **COMHLACHT CHALAFORT
ÁTHA CLIATH
DUBLIN PORT COMPANY**