

DUBLIN PORT COMPANY

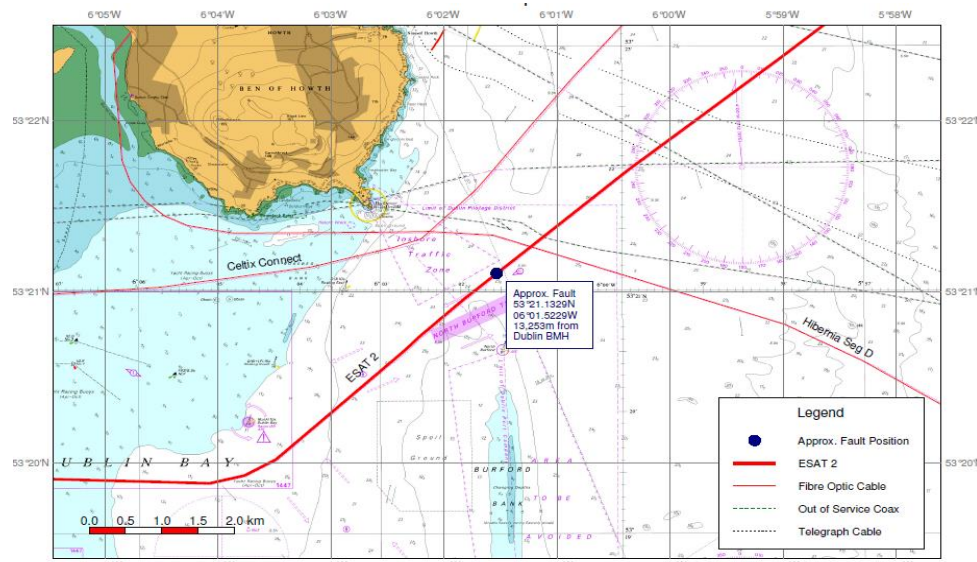
NOTICE TO MARINERS

No. 18 of 2016

Cable Repair (Inbound Lane) North Traffic Separation Scheme

The Cable Ship “**Wave Sentinel**” (Callsign **MZBC8**) is scheduled to commence recovery and repair operations to the ESAT 2 cable on Monday 22nd February 2016.

The commencement of the cable recovery operation might change as it is dependent upon weather conditions. The recovery and repair operation is expected to take 5 days. The approximate location for this work is **Latitude 53° 21.1329'N Longitude 006° 01.5229'W** as indicated in the chartlet below:



The **Wave Sentinel** will have limited manoeuvrability and all other vessels should give it a wide berth. The vessel will maintain a listening watch on VHF Channel 16 & 12 for the duration of the project.

At all times when the Wave Sentinel is on location, the inbound lane will be closed to all shipping movements. Ships both entering and leaving Dublin Bay via the North Traffic Separation Scheme should only use the outbound lane. No contra-flow is permitted. The Southern Traffic Separation Scheme will operate as normal.

Dublin V.T.S. will continue to regulate the movements of all vessels in the area.

All Notice to Mariners can be located on the Dublin Port Company Website by clicking on the following link. <http://www.dublinport.ie/information-centre/notice-to-mariners/>

Capt. David T. Dignam
Harbour Master

19th February 2016