



EMERGENCY MANAGEMENT PLAN

“The aim of the Dublin Port Company Emergency Management Plan is to provide an emergency control structure and directions to mitigate:

- Loss of life or injury to employees, contractors, visitors and local residents
- Damage to the environment
- Damage to the facilities, plant and equipment of DPC, its commercial partners, tenant companies and neighbours.

The plan also aims to reduce the impact of any adverse event within the port area which could not be prevented, through the application of designated resources, both personnel and material, to the incident.”

Version No.	Date of Issue	Authorised by	Page No.
0.1	11 August 2008	Head of Security	Page 1 of 29

Public Document

CONTENTS.

<u>Topic</u>	<u>Page No.</u>
1. Introduction	3.
2. Objectives	4.
3. Scope and Assumptions	4.
4. Abbreviations and definitions	6.
5. DPC Emergency Response Organisation, roles and responsibilities	8.
6. Port Wide Alarm Activation	11.
7. Communications	12.
8. Training, exercise and maintenance plan	13.
Annex A: DPC Port Map	15.
Annex B: Contact details: DPC Harbour Police & Port Security, Emergency Operations Centre & Fire Wardens	26.
Annex C: DPC Evacuation plan map of port roads.	27.

Version No.	Date of Issue	Authorised by	Page No.
0.1	11 August 2008	Head of Security	Page 2 of 29

Public Document

1. INTRODUCTION

Dublin Port covers an area in excess of 650 acres where many activities of a marine, commercial and industrial nature take place.

This Emergency Management Plan is designed to provide guidelines to the Dublin Port Company (DPC) Emergency Management Team in the response to an emergency within their area of jurisdiction and as a guidance document for port tenants and users.

The limits of Dublin port are defined under the Harbours Act (1996), as amended 2000.

Operations at Dublin Port include the following:

- a. Graving docks for ship repair.
- b. Ancillary services (e.g. Pilotage, Towage, Diving etc)
- c. Lo/Lo terminals operated in common user area and in designated terminals.
- d. Ro/Ro terminals facilitating both freight and passenger traffic.
- e. Facilities for handling petroleum products, LPG and molasses.
- f. Common oil pipeline linking the oil berths with the storage facilities.
- g. Dry bulk handling facilities for handling concentrate, peat, oil, grain, animal feedstuff, fertilizer, sand, coal, petroleum coke, slags, scrap metals and cement.
- h. Warehouse space
- i. Vehicle storage facilities.
- j. Cruise liner operations.
- k. Leisure craft mooring and movements at Poolbeg and Dublin City Marinas.

Tenant companies operate several industrial/commercial sites within Dublin Port and several of these companies are the defacto 'operating company' of those sites, and therefore have the ultimate responsibility for emergency planning within those facilities.

Version No.	Date of Issue	Authorised by	Page No.
0.1	11 August 2008	Head of Security	Page 3 of 29

Public Document

2. OBJECTIVES

The objectives of this plan are

- a. To provide an emergency control organisation structure which will enable DPC to respond rapidly and efficiently to any emergency in order to prevent injury to personnel, damage to property or the environment as well as minimizing or eliminating the impact to neighbouring communities.
- b. To ensure all appropriate and relevant resources are identified in advance and made available as quickly as possible during an emergency within Dublin Port.

3. SCOPE AND ASSUMPTIONS

The Dublin Port Emergency Management Plan outlines the general guidelines and actions to be taken by the Emergency Management Team (EMT) in the event of an emergency occurring within Dublin Port.

The plan is intended for guidance purposes only and may be adapted depending on the circumstances of a particular emergency. The actions to be taken in any given emergency will be decided by the EMT.

The Head of Operations, the Harbour Master or the Head of Security will decide the activation of the Emergency Management Plan on a case-by-case basis depending on the severity of the incident.

The plan is designed to cater for 6 marine and 6 land based emergencies as listed below, however the detailed standard operating plans and procedures are not included in the public document for security and confidentiality reasons.

Tenants, customers and emergency services can access a complete copy of the emergency plan by contacting the DPC Head of Security on 01 8876000.

Version No.	Date of Issue	Authorised by	Page No.
0.1	11 August 2008	Head of Security	Page 4 of 29

Public Document

Marine Emergency:

1. Major incident onboard a vessel such as fire, flooding or cargo related.
2. Collision between vessels or between a vessel and a fixed object.
3. Grounding of a vessel.
4. Major oil spillage from a vessel or jetty.
5. Major oil spill at sea or oil entering the port from a source upriver.
6. A security incident, involving a ship, which has the potential to escalate into an emergency situation.

Land Emergency:

7. Major fire within the port estate.
8. Major oil spill on the shore side.
9. Major spill of hazardous material.
10. A vehicle accident involving hazardous material.
11. Chemical incidents (e.g. toxic cloud).
12. Major incident in an oil, gas or hazardous material storage area or facility.

The Emergency Management Plan makes the following assumptions:

- All personnel with specific roles and responsibilities are familiar with their part in the plan, and have been exercised in the implementation of the plan.
- All contact details for key stakeholders are kept up-to-date.
- That the resources outlined in the plan are available and maintained as required.

Version No.	Date of Issue	Authorised by	Page No.
0.1	11 August 2008	Head of Security	Page 5 of 29

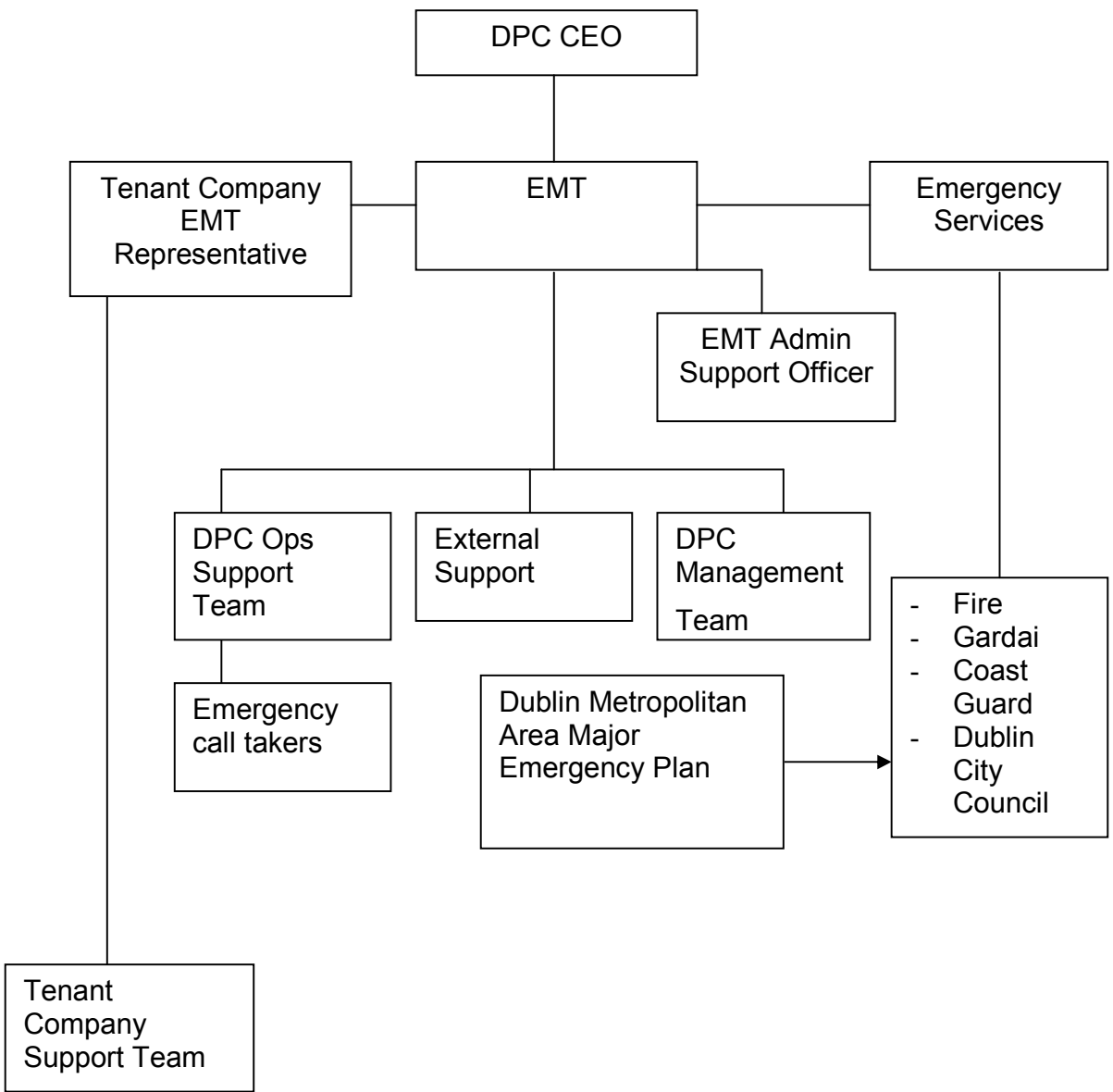
Public Document

4. ABBREVIATIONS AND DEFINITIONS

AAR	After Action Review (formal debrief).
COP	Common Oil Pipeline
DCMNR	Dept. of Transport & Maritime Affairs
DFB	Dublin Fire Brigade
DPC	Dublin Port Company.
EMP	Emergency Management Plan
EMT	Emergency Management Team
EOC	Emergency Operations Centre
EPA	Environmental Protection Agency
HP & PS	Harbour Police & Port Security
HSA	Health and Safety Authority
ISPS	International Ship and Port Facility Security (code)
MCIB	Marine Casualty Investigations Board
MSDS	Material Safety Data Sheet
NOG	National Operations Group (oil spill)
NOK	Next of Kin
PFSP	Port Facility Security Plan.
POC	Port Operations Centre
RVP	Emergency Services Rendezvous Point
SSP	Ship's Security Plan
VTS	Vessel Traffic Services

Version No.	Date of Issue	Authorised by	Page No.
0.1	11 August 2008	Head of Security	Page 6 of 29

5. DPC EMERGENCY RESPONSE ORGANISATION, ROLES AND RESPONSIBILITIES.



Version No.	Date of Issue	Authorised by	Page No.
0.1	11 August 2008	Head of Security	Page 7 of 29

Public Document

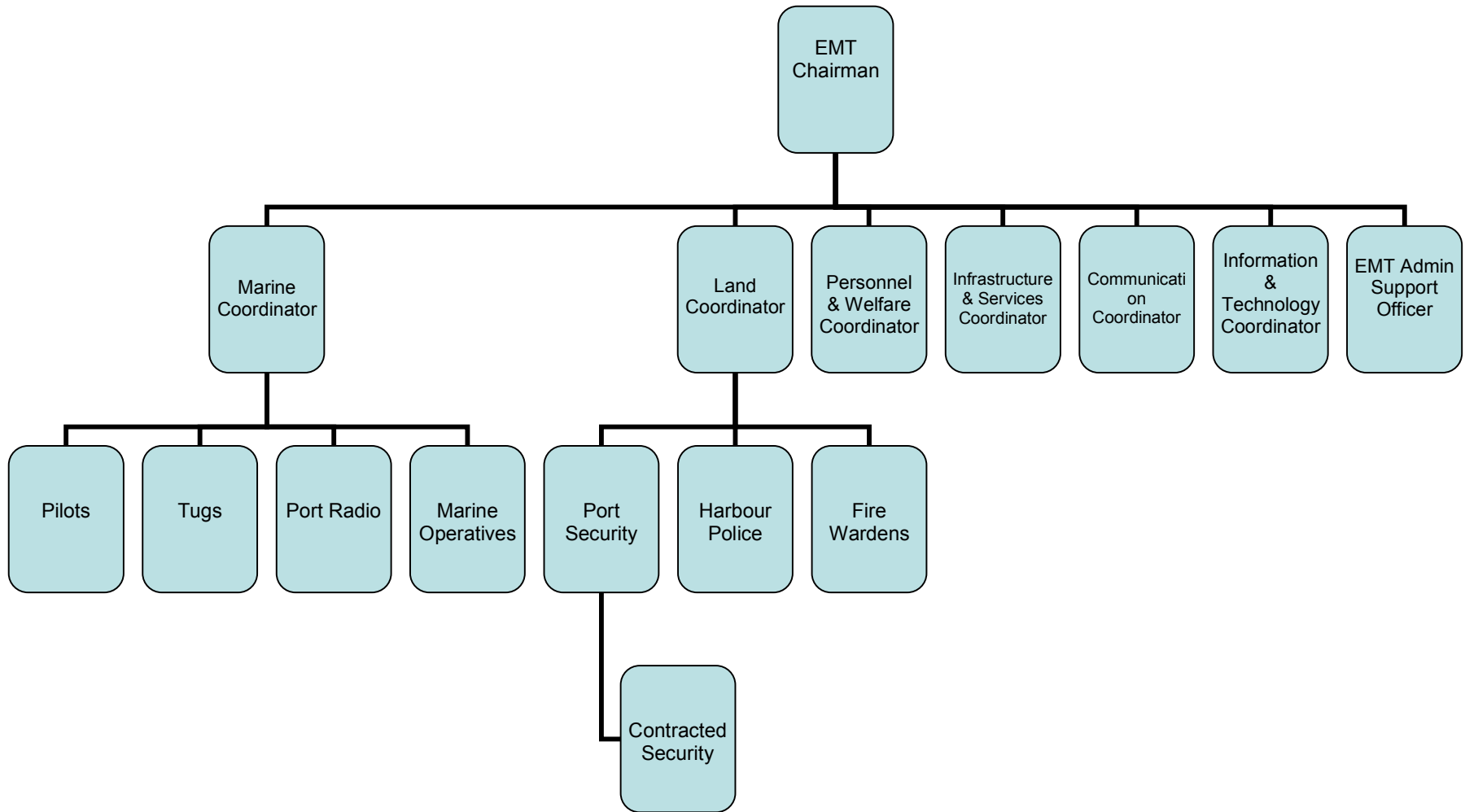
DPC Emergency Management Team Members.

Appointment/ role	Name	Contact Details
EMT Chairman Head of Operations	Seamus McLoughlin	Phone 01 8876000 Fax 01 8557400 Email info@dublinport.ie
Alternate	Marine: Captain. David Dignam Land: J Fairley	Phone 01 8876000
EMT Marine Coordinator Harbour Master	Capt David Dignam	Phone 01 8876000 Fax 01 8557400 Email info@dublinport.ie
Alternate	John Fairley	Phone 01 8876000
EMT Land Coordinator Head of Security	John Fairley	Phone 01 8876000 Fax 01 8557400 Email info@dublinport.ie
Alternate	Capt. David Dignam	Phone 01 8876000
Infrastructure and Services Coordinator Maintenance and Services Manager	Ciaran Callan	Phone 01 8876000 Fax 01 8557400 Email info@dublinport.ie
Alternate	P Killeen	Phone 01 8876000
Personnel and Welfare Coordinator Human Resources Manager	Joanne Doyle	Phone 01 8876000 Fax 01 8557400 Email info@dublinport.ie
Alternate	Michael Lennon	Phone 01 8876000
Communications Coordinator Marketing Manager	Brenda Daly	Fax 01 8557400 Email info@dublinport.ie
Alternate		
Information and Technology Coordinator IT Manager	Conor Farrell	Phone 01 8876000 Fax 01 8557400 Email info@dublinport.ie
Alternate	Keith Nolan	Phone 01 8876000

Version No.	Date of Issue	Authorised by	Page No.
0.1	11 August 2008	Head of Security	Page 8 of 29

Public Document

EMT Command Chart



Version No.	Date of Issue	Authorised by	Page No.
0.1	11 August 2008	Head of Security	Page 9 of 29

Public Document

Other DPC Personnel, not on the CORE EMT.

- EMT Administration Support Officer.
- Emergency Call Takers
- Port Radio (VTS)
- Marine Operatives
- Harbour Police & Port Security (Contact details at Annex B on Page 26)
- Fire Wardens
- Fire Marshall's
- Trained First Aid Personnel

Emergency Services.

In the event of an emergency in Dublin Port, Emergency Services will go immediately to the RVP, located at the junction of East Wall Road & Tolka Quay Road West. The primary unit of the initial lead agency will attend the scene and relay information to emergency services gathered at the RVP. The lead agency will appoint a senior officer as the 'On Site Coordinator' at a safe forward point and senior operational staff from each emergency service will collectively manage the emergency from this location.

The Emergency Operations Centre

The primary EOC is located on the 1st floor of the POC located at the southern end of Breakwater Road, and the EMT will meet here in the event of an emergency being declared. Should the emergency affect the POC then the alternate EOC will be located in the Committee room of DPC located on the 4th floor of the Port Centre, Alexandra Road. Should both locations be unavailable then the EMT chairman will decide on an appropriate location and inform other EMT members.

For the EOC to operate effectively it is essential that senior management representatives from the Emergency Services, i.e. Gardai, Fire Service and HSE, affected tenant premises are represented and work in partnership with the DPC EMT. The lead agency will appoint a Controller of Operations, who will be located in the EOC.

Version No.	Date of Issue	Authorised by	Page No.
0.1	11 August 2008	Head of Security	Page 10 of 29

6. PORT WIDE ALARM ACTIVATION

The DPC fire alarm system is located in the HP&PS Control Room, situated on the ground floor of the POC, Breakwater Road, Dublin Port. The fire alarm system monitors approximately 21 sites and numerous break glass units located throughout the port estate.

The fire alarm system can be activated manually or automatically from various points around the port, and is directly linked to the alarm system.

When activated, the HP&PS are alerted and have 2.5 minutes to investigate the cause of the alarm before the Port wide alarm starts, or in cases where a fire is confirmed the port wide siren can be activated immediately.

The fire alarm telemetry system indicates the location of the alarm activation and keeps an electronic record of all incidents. In the event of a false alarm or technical fault the system can be manually overridden to prevent the port-wide evacuation alarm activating.

The port evacuation sirens are located at the ESB North Wall Power Station, the Oil Jetties and Crosby's yard, and are generally tested between 11.00am and 12.00 p.m. (midday) on the first Monday of every month, excluding Bank Holidays.

For confirmed alarm activations, the affected site and HP&PS must call 999/112 and request emergency services attend, whilst clearly stating the nature of the emergency, name and location of the site affected.

HP&PS will immediately open the emergency gates located at the western end and junction of Tolka Quay Road and East Wall Road and this immediate area operates as the Emergency Services RVP.

DFB will be dispatched to the Port to deal with the incident, whilst HP&PS will implement a traffic diversion plan, with the support of Gardai.

The port wide alarm system is a continuous wailing alarm sound, similar to an air-raid siren. On hearing this alarm, the following actions take place:

- Oil zone personnel to monitor the COP radio and listen for instructions from HP&PS.
- All top tier SEVESO sites to monitor the COP radio and listen for instructions from HP&PS
- Other port users to expect instructions from HP&PS via Loud Hailer from patrol vans or HP&PS visiting their premises to advise if evacuation is required.

Version No.	Date of Issue	Authorised by	Page No.
0.1	11 August 2008	Head of Security	Page 11 of 29

7. COMMUNICATIONS

In the event of a major emergency in Dublin Port, DPC shall consider the use of all media avenues to assist in the information flow to staff, tenants, commercial operators, port users and the public.

In the course of DPC dealing with a major incident, the EMT Chairman (in consultation with the CEO) and the EMT Communications Coordinator will decide who will communicate with various elements of the media.

Media Enquiries in Person

Should a serious incident occur at a Dublin Port facility, the media will more than likely converge on Dublin Port to be as near as possible to the scene of the incident. All media trying to access Dublin Port should be referred to the Communications Coordinator, located in Port Centre, Alexandra Road.

Telephone Enquiries

The response to callers by reception staff at DPC will be determined by the level of information they have at the time, and will depend on the type and scale of the emergency.

In the case of a major emergency the amount of incoming calls will increase and DPC Call Takers will be required to deal with the increased workload. The EMT Communications Coordinator will brief call takers of the emergency and information to be obtained or provided.

Press Conferences

The sole authority for holding a press conference rests with the EMT Chairman, after consultation with the EMT Communications Coordinator and the CEO.

The EMT Chairman in consultation with the EMT Communications Coordinator will decide the press conference location.

Version No.	Date of Issue	Authorised by	Page No.
0.1	11 August 2008	Head of Security	Page 12 of 29

8. TRAINING, EXERCISE AND MAINTENANCE PLAN

General

DPC's Incident Management capability is, and will continue to be, a function of the following two key factors:

- The quality of the information contained within the plan, and
- The familiarity of the key EMT members in implementing the plan.

Training and exercising within the context of DPC's Emergency Management Plans is concerned with achieving the following three objectives:

- Continuously improving the plans (As a result of lessons learnt from previous exercises and practical experience)
- Continuously familiarising the EMT members, both with the plan and their roles - (Inevitably, there will be changes in the Incident management organisation from time to time, hence there will be a need to familiarise new personnel with their roles etc.)
- Continuously developing the competence of the EMT organisation implementing the plan.

Objective

The objective of this 'Training, Exercise and Maintenance Plan' is to provide a structured framework for training and exercising the members of the EMT in their roles as well as providing a sound basis for maintaining the integrity of the information contained within the plan.

Annual Training Requirement

Training will be conducted annually as follows:

- EMT members and their alternates will receive training in relation to their role in the Emergency Management System.
- The EMT will exercise formally in the implementation of the Emergency Management Plan.
- Administrative staff and potential support group members will receive Emergency Management familiarisation training.
- Security, reception and other staff, as relevant, will receive training on the Emergency Management Plans.

Version No.	Date of Issue	Authorised by	Page No.
0.1	11 August 2008	Head of Security	Page 13 of 29

Public Document

ANNEX A:

- Page 15** **Map of Dublin Port terminals and security areas.**
- Page 16 – 21** **Individual maps of areas 1-6 (all tenants number referenced).**
- Page 22-25** **Port tenants and users.**

ANNEX B:

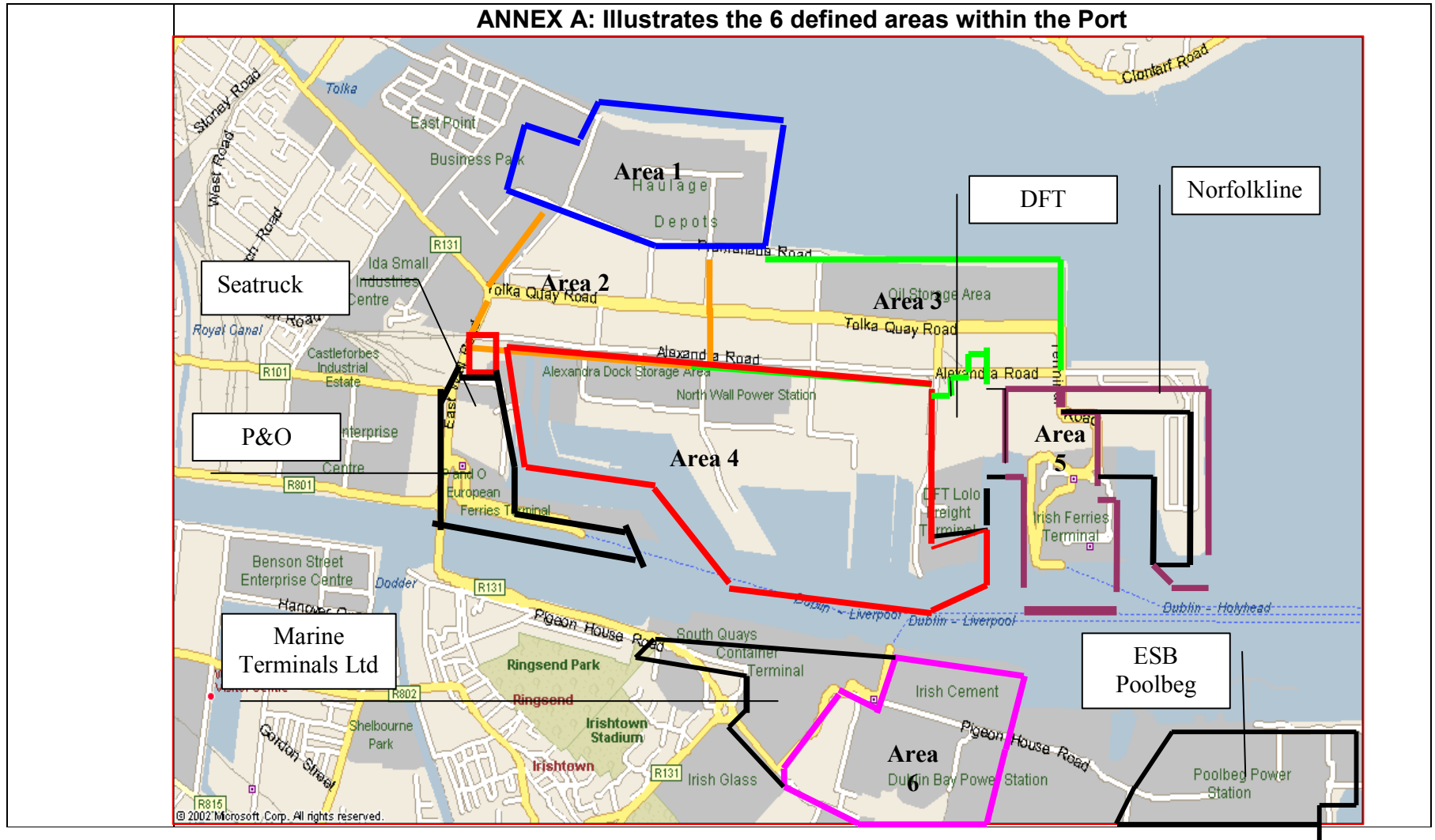
- Page 26** **Harbour Police & Port Security, Emergency Operations Centre & Fire Wardens**

ANNEX C:

- Page 27 – 29** **Dublin Port Company Evacuation Plan**

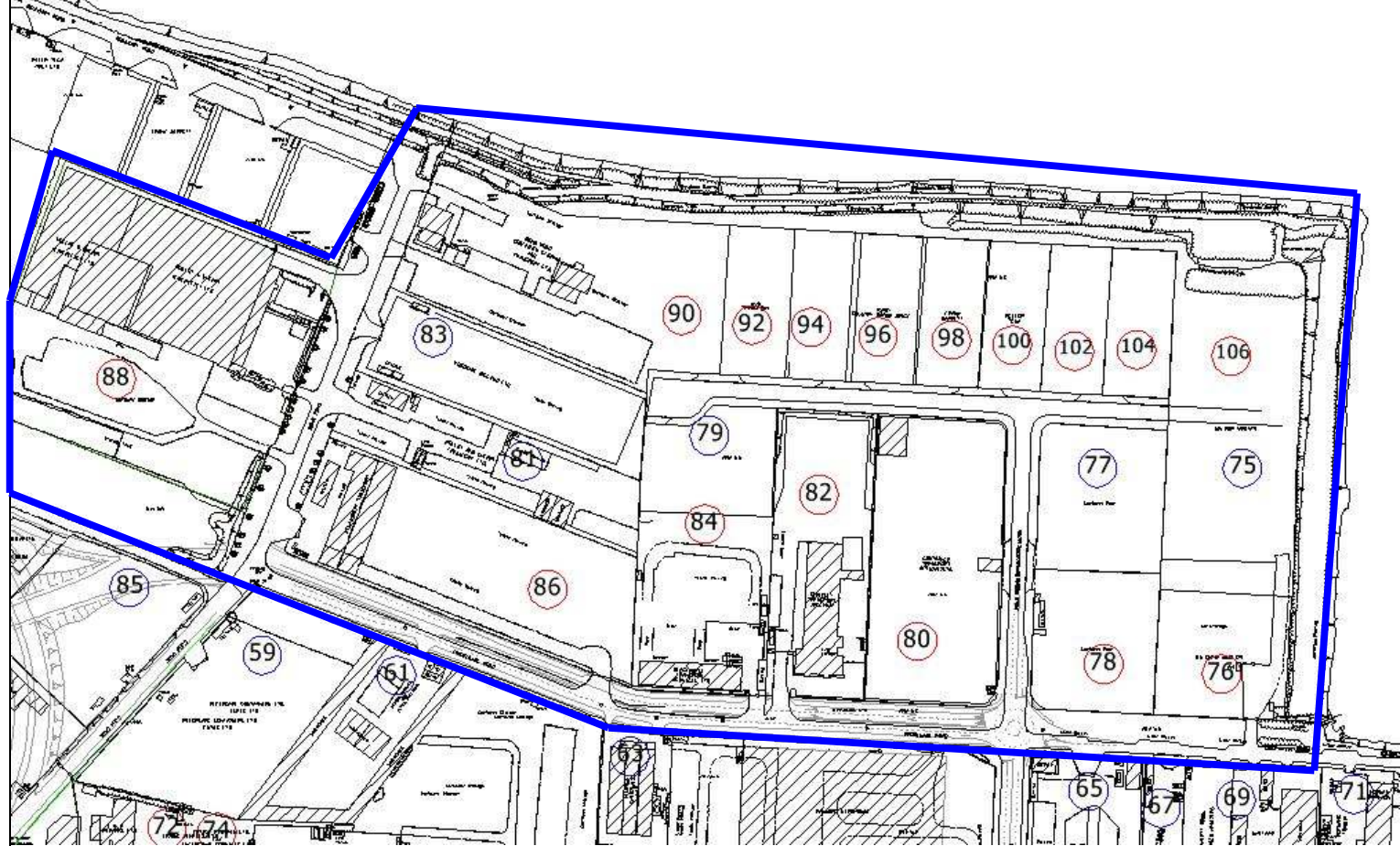
Version No.	Date of Issue	Authorised by	Page No.
0.1	11 August 2008	Head of Security	Page 14 of 29

ANNEX A: Illustrates the 6 defined areas within the Port



Version No.	Date of Issue	Authorised by	Page No.
0.1	11 August 2008	Head of Security	Page 15 of 29

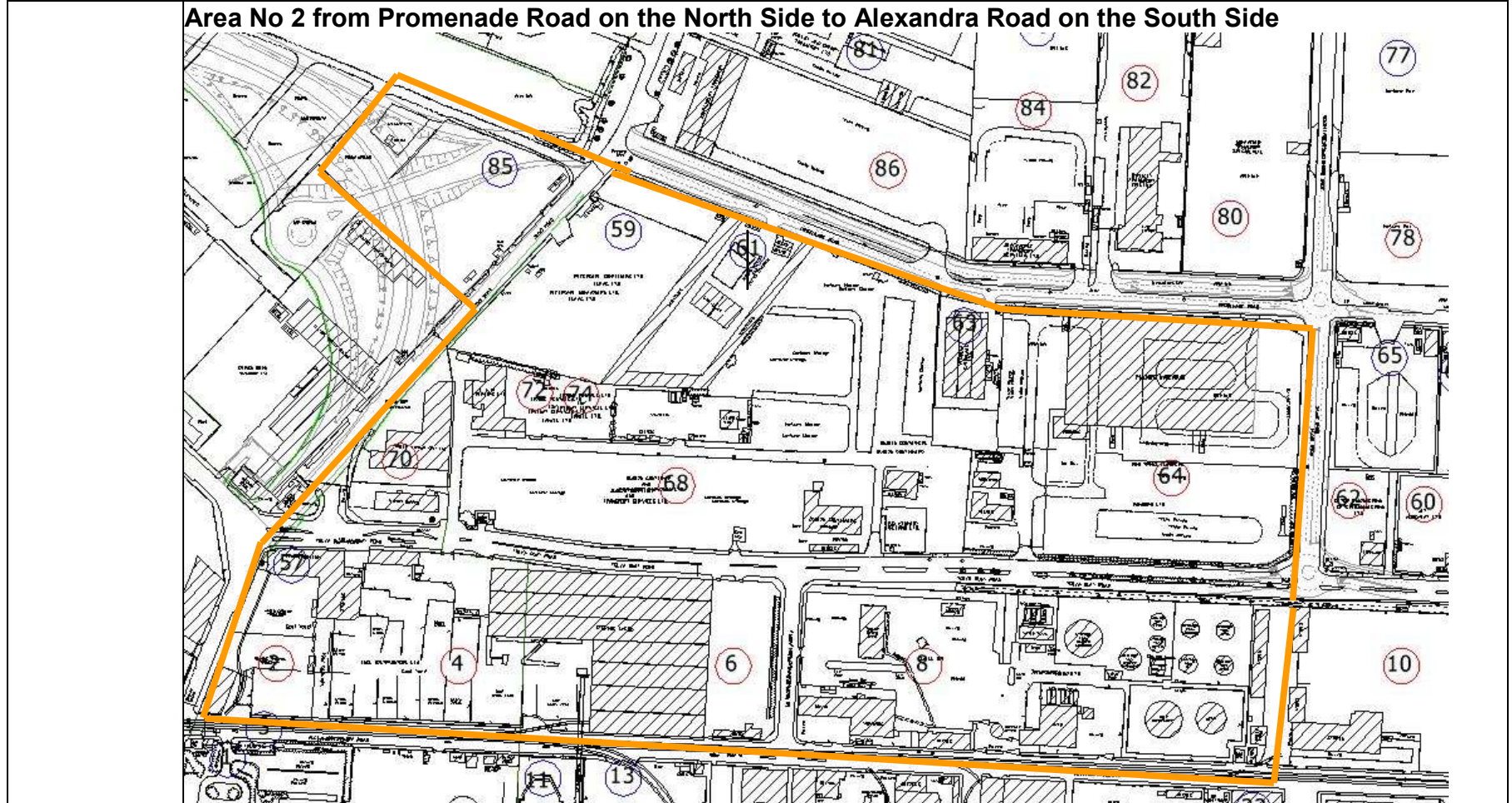
Area No 1 from the water on North Side to Promenade Road on the South Side



Version No.	Date of Issue	Authorised by	Page No.
0.1	11 August 2008	Head of Security	Page 16 of 29

Public Document

Area No 2 from Promenade Road on the North Side to Alexandra Road on the South Side



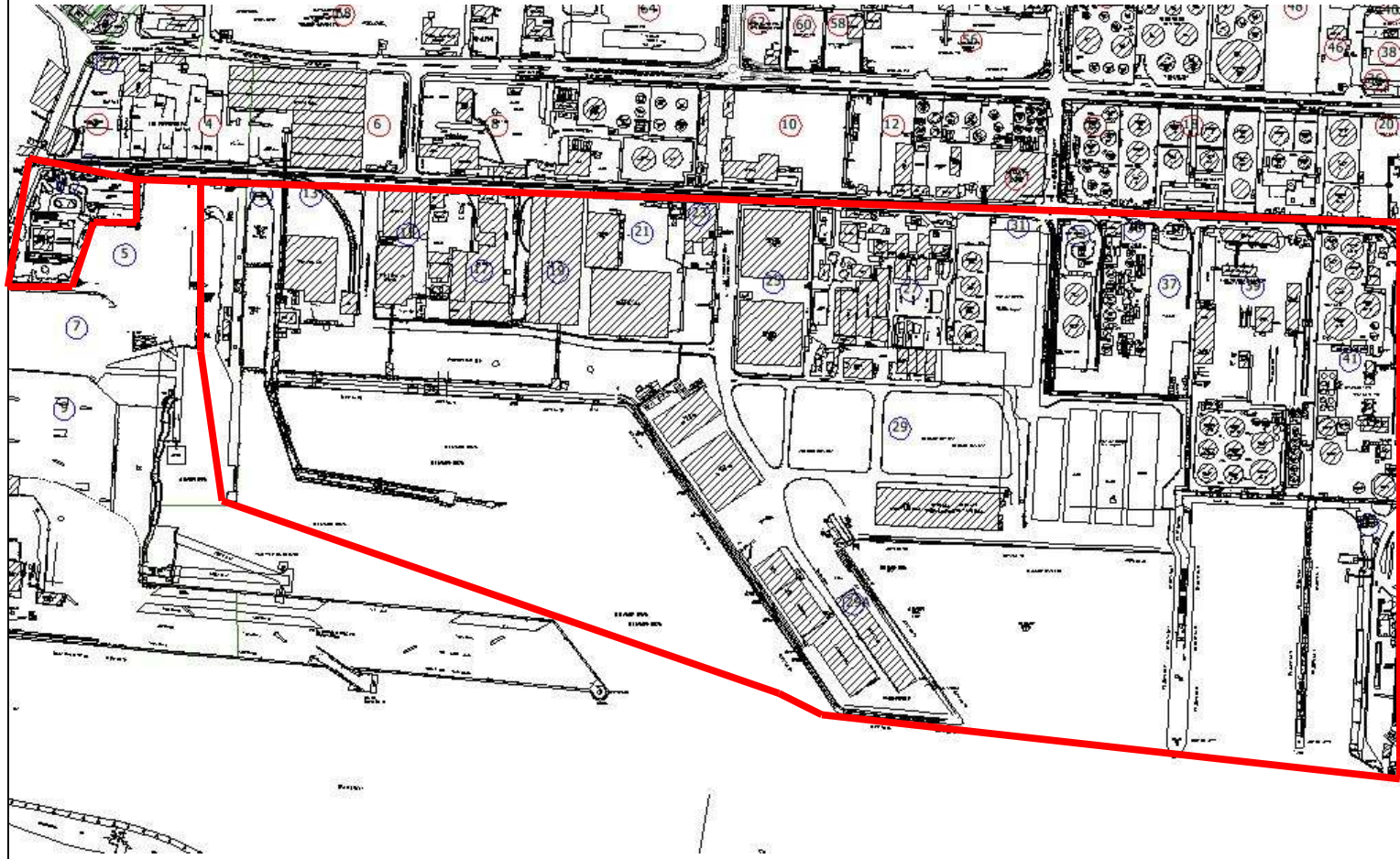
Version No.	Date of Issue	Authorised by	Page No.
0.1	11 August 2008	Head of Security	Page 17 of 29

Area No 3 from Promenade Road East on the North Side to Alexandra Road on the South Side



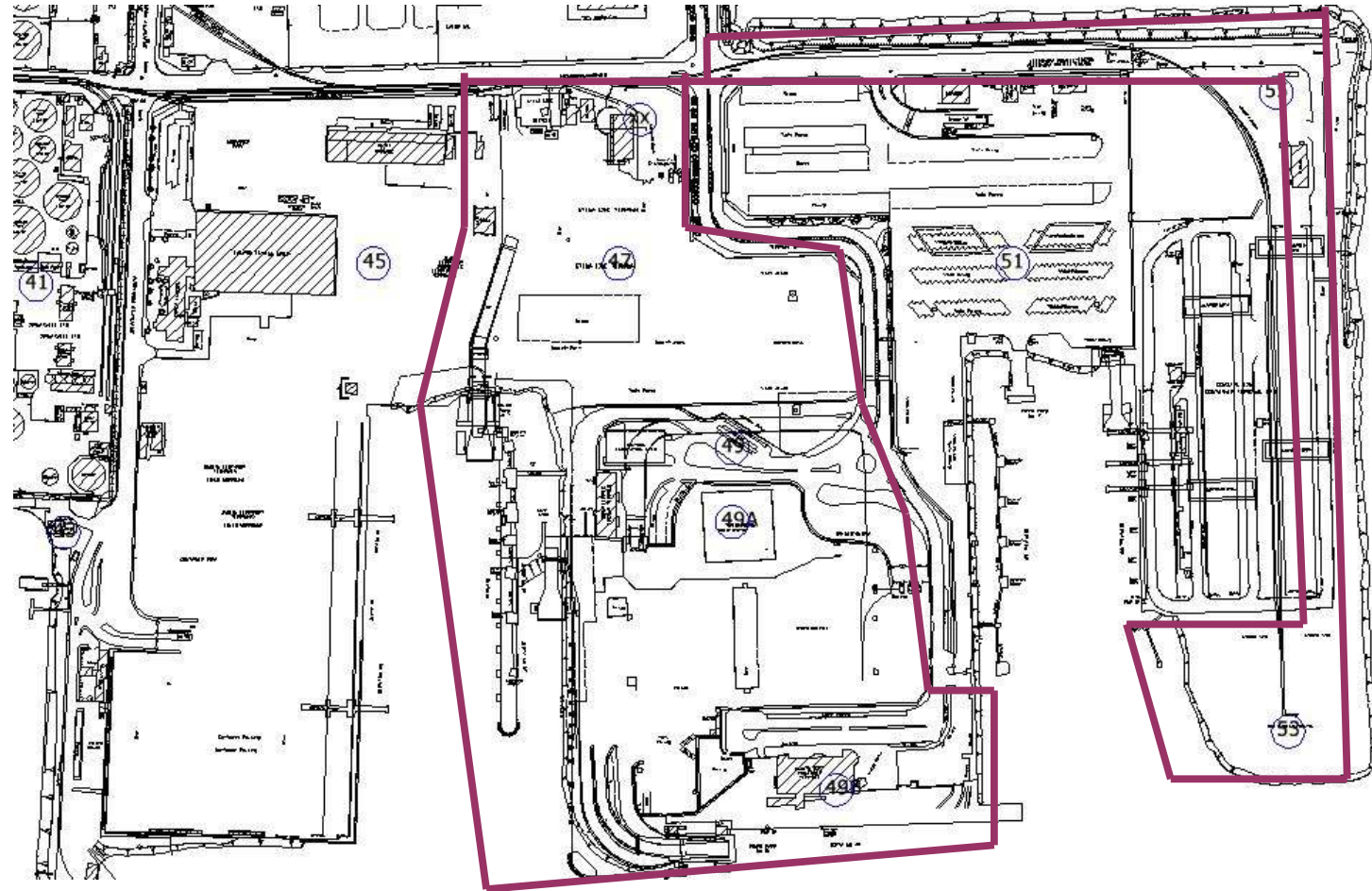
Version No.	Date of Issue	Authorised by	Page No.
0.1	11 August 2008	Head of Security	Page 18 of 29

Area No 4 from Alexandra Road North Side to the Water on the South Side



Version No.	Date of Issue	Authorised by	Page No.
0.1	11 August 2008	Head of Security	Page 19 of 29

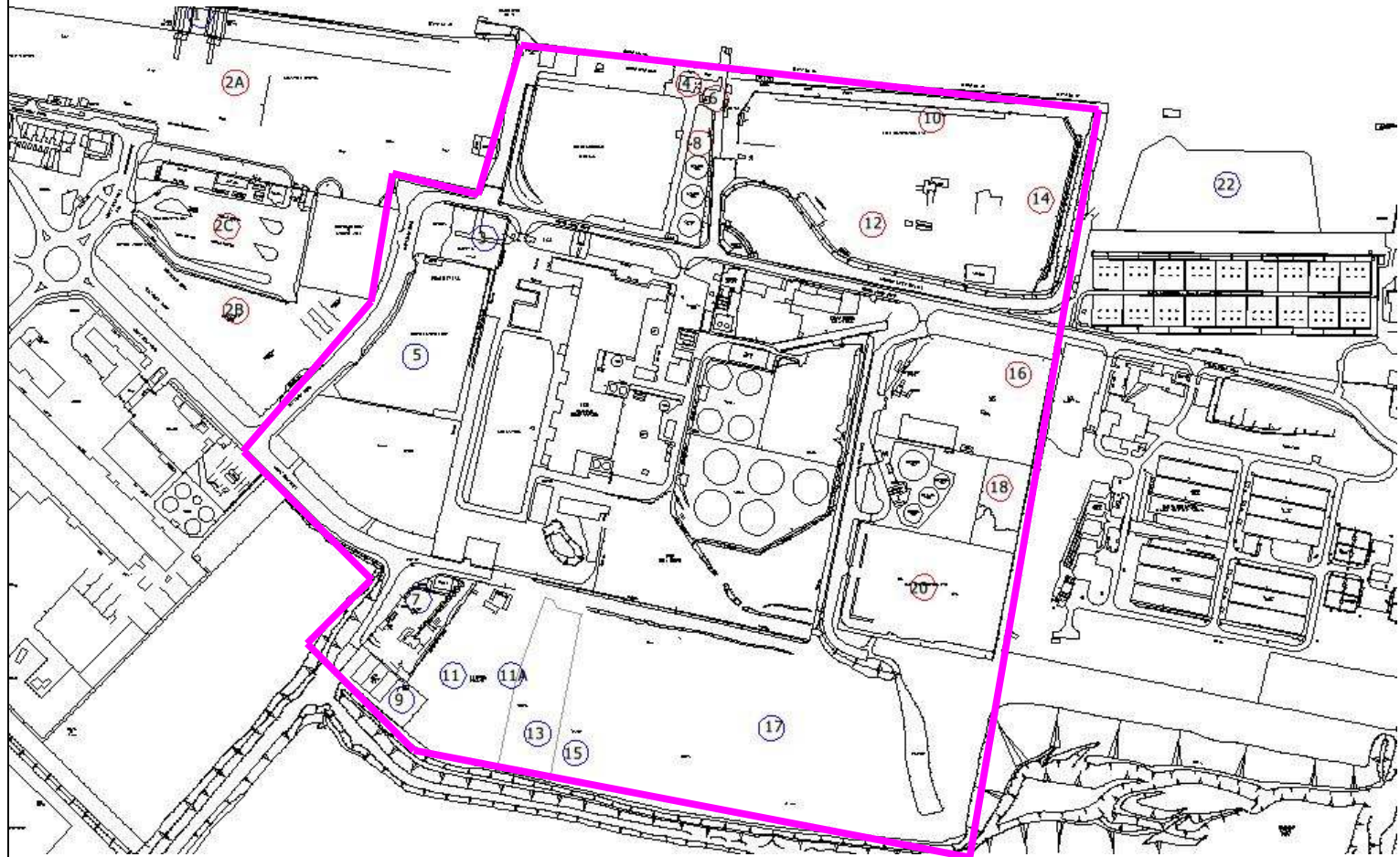
Area No 5 from Alexandra Road on the North Side to the Water on the South Side



Version No.	Date of Issue	Authorised by	Page No.
0.1	11 August 2008	Head of Security	Page 20 of 29

Public Document

Area No 6 from Alexandra Road on the North Side to the Water on the South Side



Version No.	Date of Issue	Authorised by	Page No.
0.1	11 August 2008	Head of Security	Page 21 of 29

Public Document

Listing of Port Tenants and Users

No.	Lessee
-	Allen Engineering
1	Aquaship Agencies Ltd. Port Centre, Alexandra Rd., Dublin 1.
1	Aseco (Ireland) Ltd. Port Centre, Alexandra Rd., Dublin 1.
98	Barrett, Frank Haulage Ltd. Bond Drive Ext., Dublin 1
2	Bartrans
9	Bissett, John Engineering Ltd. South Bank Rd., Dublin 4.
4	Bord na Mona (Formerly Scotts Horticultural) Main St., Newbridge, Co. Kildare.
26, 32	Calor Kosangas Ltd. (Tolka Quay Rd., Dublin 3)
5, 7	Seatruck Ferries (formerly Celtic Link Ferries Ltd) Alexandra Road, Dublin 1
69	Chetham Timber Co. Ltd. Promenade Rd., Dublin 3.
37	Chevron Ireland Ltd (Joint Fuels Terminals) (Alexandra Rd., Dublin 1.)
70	Coleman Freight Ltd., Tolka Quay Rd., Dublin 3
33	Coras Iompair Eireann (Alexandra Rd., Dublin 1.)
1, 94, 96	Country Manor Bricks Bond Dr. Ext., Dublin 3.
30	Crosbie, Henry A. Tolka Quay Rd., Dublin 3.
74	CRS Refrigeration
49	Dobson Fleet Management Ltd, C./- Irish Ferries, Alexandra Road, Dublin 1
102	Donoghue Road Haulage (Bond Dr. Ext., Dublin 1.)
11	Dover Transport Ltd. (Everton Haulage) (South Bank Rd., Dublin 4.)
20	Dublin City Council, Development Dept.,
68	Dublin Container & Transport Services P.O. Box 906, Tolka Quay. Rd., Dublin 3.
11	Dublin Graving Docks Ltd., c/o Graving Docks, Alexandra Rd.,
36,46	Dublin Port Training & Development (moved to Port Centre, June 2008)
75	Dublin Port Workshop & Stores

Version No.	Date of Issue	Authorised by	Page No.
0.1	11 August 2008	Head of Security	Page 22 of 29

Public Document

No.	Lessee
27	Electricity Supply Board North Wall Power Station, Dublin 1.
16, 18	ESSO Ireland Ltd. Joint Fuel Terminal, Alex. Rd., D. 1
59	Futac Ltd. t/a Reefercare, Tolka Quay Rd., Dublin 3.
70	Jerry Greene Shipping & Transport Ltd., Administration Bldg., Tolka Quay Rd.
65	Gwynedd Shipping (Ireland) Ltd. Promenade Rd., Dublin 3.
15, 19	Hall, R & H Ltd. (Alexandra Quay, Dublin 1.)
1	A.M. Hamilton & Co., Port Centre, Alexandra Rd., Dublin 1.
12(S), 16(S)	Hammond Lane Co. Ltd. Pigeon House. Rd., Ringsend, Dublin 4.
71	Heiton Buckley Ltd., Promenade Rd., East Wall, Dublin 3.
1/18(S)	Hibernian Molasses Co. Ltd. South Bank Rd./Pigeon House. Rd., Ringsend, Dublin 4.
104	Hughes Transport Ltd., Bond Dr. Ext., Dublin 3.
28	Hutchison 3G Ireland (Telecommunications Mast at Tolka Quay Rd.)
70	Inspection Services Ltd., Administration Bldg., Bond Rd., Dublin 1.
1	(Vacated)
34	Indaver Ireland, Tolka Quay Rd., Dublin 3.
10(S)	Irish Cement Ltd., Pigeon House. Rd., Dublin 4.
41	Irish Bitumen Storage Ltd Alexandra Rd., Dublin 1.
49	Irish Ferries Ltd. P.O. Box 19, Ferryport, Alexandra Rd., Dublin 1.
33	Irish Rail - see Coras Iompair Eireann above (Alexandra Rd. Dublin 1)
35	Irish Tar & Bitumen Suppliers Ltd. Alexandra Rd., Dublin 1.
49a	Isle of Man Steam Packet Co. Ltd Ferryport Terminal, Alexandra Road, Dublin 1.
92	JJN Transport Ltd., Bond Dr. Ext., Dublin 3.
72	Kenny Brian & Kieran c/o Lankel Ltd., Tolka Quay Rd., Dublin 3.
13(S)	Kilsaran Concrete Ltd. Dunboyne, Co. Meath.
12, 14	Lagan Bitumen (formerly Classic Fuel & Oil/Burmah) Alexandra Rd., Dublin 1.
15(S)	Laing O'Rourke Utilities (Ireland) Ltd., South Bank Rd., Dublin 4. (Temp. Letting)
70	Lambay Shipping Services Ltd., Admin. Building, Tolka Quay Rd., Dublin 3.

Version No.	Date of Issue	Authorised by	Page No.
0.1	11 August 2008	Head of Security	Page 23 of 29

Public Document

No.	Lessee
60	McBurney Refrigeration Ltd., Tolka Quay Rd., Dublin 3.
70	Marine Electronic Services Admin. Building, Tolka Quay Rd., Dublin 3
2a,b, c, d (S)	Marine Terminals Ltd., South Quays Container Terminal Pigeon House. Rd., Ringsend, Dublin 4
28	Meteor Mobile Communications, (Telecommunications Mast, Tolka Quay. Rd.)
81, 88	Molloy & Sherry (Eirfreeze) Ltd. Bond Rd., Dublin 3.
81	Molloy & Sherry Transport Ltd., Link Road, Dublin 3.
86	Montgomery Transport Ltd. Link Road., Dublin 3.
61	Morgan Timber, Promenade Rd., Dublin 3.
25	Moyglare Holdings Ltd. 3 Branch Rd. South, Alexandra Rd., Dublin 1.
55	Norfolk Line Irish Sea Ferry Services (formerly – Norse Merchant Ferries Ltd.) Alexandra Rd. Ext., Dublin 1.
28	O2 Communications (Ireland) Ltd., (Telecommunications Mast, Tolka Quay Rd.)
17	Odlum Group Ltd. Alexandra Rd., Dublin 1.
82	O'Reilly Transport Newry Ltd. Promenade Rd., Dublin 3.
62	Otter Engineering Bond Drive, Dublin 3.
9	P & O European Ferries North Quay Ext., Dublin 1.
100	Performance Improvements Ltd., Bond Dr. Ext., Dublin 3.
21	Port Logistic Services Ltd., Alexandra Rd., Dublin 1.
2(S)	Poolbeg Yacht & Boat Club South Bank, Pigeon House. Rd., Dublin 4.
23	Portroe Stevedores Ltd. Ocean Pier, Alexandra Rd., Dublin 1.
1	Quality Freight Ltd. Port Centre, Alexandra Rd., Dublin 1.
59	Reefercare, (See Futac Ltd.)
76	Commissioners of Public Works (New Customs & Excise Bldg.), Promenade Rd., Dublin 3.
7(S)	Roadstone Dublin Ltd. Whitebank Rd., SBQ, Dublin 4.
80	Ryan JP & Sons Ltd., (See Darland Enterprises Ltd.)

Version No.	Date of Issue	Authorised by	Page No.
0.1	11 August 2008	Head of Security	Page 24 of 29

Public Document

No.	Lessee
5(S)	Rushfleet Ltd. Whitebank Rd., South. Bank Quay., Dublin 4.
70	Sea Air Intern. , Administration Building, Tolka Quay Rd., Dublin 3.
5, 7	Seatruck Ferries (formerly Celtic Link Ferries Ltd) Alexandra Road, Dublin 1
1	Seawheel Ireland. Ltd., c/o Samskip MCL BV, Port Centre, Alexandra Rd., Dublin 1.
6(S)	(Vacated)
3(S)	Silke Haulage Ltd. c/o South Quays Container Terminal Ringsend, Dublin 4. (St. Catherine's Annex, Dublin 4.)
3	Solana Investments Ltd. Alexandra Rd., Dublin 1.
54, 73	Statoil Ireland Ltd. Alexandra Rd & Tolka Quay Rd.
47	Stena Line Alexandra Rd., Dublin 1
58	Storecon Ltd. Tolka Quay Rd., Dublin 3.
67	Tank Trans Ltd. Promenade Rd., Dublin 3.
13	Tara Mines Ltd., Alexandra Terminals Ltd. Alexandra Rd., Dublin 1.
38, 50,52	Tedcastle McCormick & Co. Ltd. (Tolka Quay Rd., Dublin 3.)
70	Timed Clearance Ltd., Admin. Building, Tolka Quay Rd., Dublin 3.
8, 20	Topaz Energy Ltd, Alexandra Rd., Dublin 1.
77, 78	Topaz (Dublin Port Service Station), Promenade Road & Bond Drive, Dublin 1
1,70	Transroute Tunnel Operations Ltd., Port Centre & Admin Bldg. Tolka Quay Rd, Dublin 3.
58	Trim Transport Ltd. Tolka Quay Rd., Dublin 3
1, 28	Vodafone Ireland. Ltd., (Telecommunication Mast – Tolka Quay Rd.)
83	Woodside Ireland Ltd. Link Road, Dublin 3.
64	Wincanton, Tolka Quay Rd., Dublin 3.
70	Wrafter Tim, and Associates, Administration Building, Tolka Quay. Rd., Dublin 3.

Version No.	Date of Issue	Authorised by	Page No.
0.1	11 August 2008	Head of Security	Page 25 of 29

Public Document

ANNEX B

Contact Details: Harbour Police & Port Security, Emergency Operations Centre & Fire Wardens

HARBOUR POLICE & PORT SECURITY

Name	Direct line	Fax	E-mail
Harbour Police & Port Security	Line 1: 01 8876858 Line 2: 01 8876859	01 8876883	controlroom@dublinport.ie

EMERGENCY OPERATIONS CENTRE

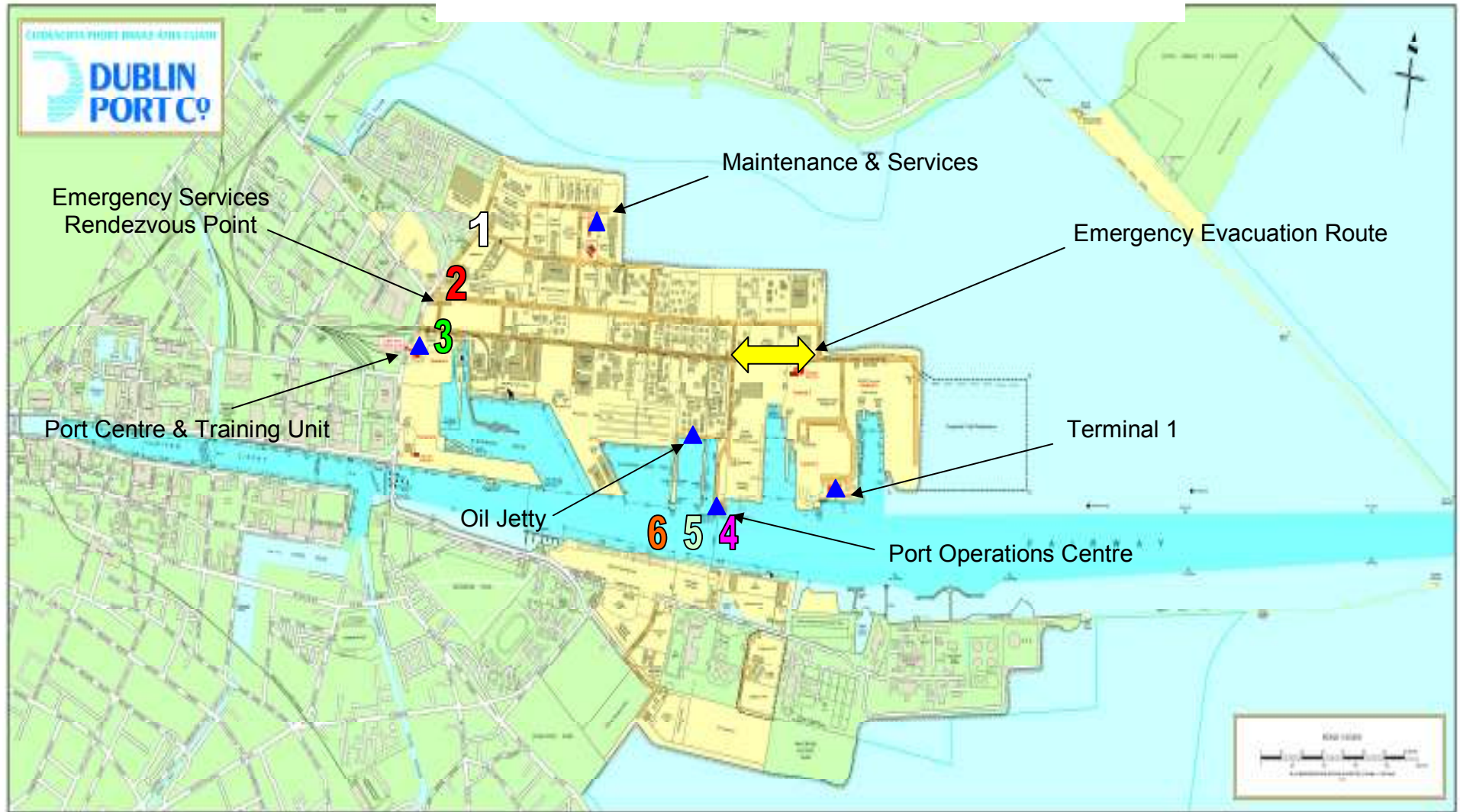
EOC Line	Number
Line 1	01 8876833
Line 2	01 8876834
Fax Number	01 8876057

FIRE WARDENS

Name	Direct line
Fire Wardens	01 8559010

Version No.	Date of Issue	Authorised by	Page No.
0.1	11 August 2008	Head of Security	Page 26 of 29

ANNEX C - DUBLIN PORT CO. EVACUATION PLAN



Version No.	Date of Issue	Authorised by	Page No.
0.1	11 August 2008	Head of Security	Page 27 of 29

Public Document

Dublin Port Company Evacuation Plan

DPC has approximately 170 employees located at the following locations identified by blue diamond shapes on the map located on page 27.

- Port Centre & Training Unit, Corner of East Wall Road & Alexandra Road.
- Maintenance & Services Building, Bond Drive Extension
- Oil Jetty Control Room, Jetty Road
- Port Operations Centre, Breakwater Road
- Terminal 1 Building, Terminal Road South

All locations have individual emergency evacuation standard operating procedures including assembly points as per **Annex C** on page 27-29.

Due to the nature of business carried out within the port via the common oil pipeline and the bulk storage of petroleum products, LPG and molasses there is always the potential for a serious event to occur, which could require a full or partial evacuation. Six evacuation and or alternative routes to exit/enter the port environs have been designated for all port users, including emergency services in attendance.

1. Promenade Road
2. Tolka Quay Road (locked gates, keys held by Harbour Police & Head of Security)
3. Alexandra Road
4. Port Operations Building (facilitated by Harbour Master via Marine Operatives)
5. East Oil Jetty (life boat capsule)
6. West Oil Jetty (life boat capsule)

Version No.	Date of Issue	Authorised by	Page No.
0.1	11 August 2008	Head of Security	Page 28 of 29

Public Document

In addition to the above, Alexandra Road (DFT terminal between Breakwater Road & Terminal Road) is a designated evacuation route. Keys to the locked ISPS security gates are held in the HP& PS Control Room and DFT Security personnel.

In addition to the above, DPC acknowledge there are other alternatives evacuation routes available to be utilised, however the nature or extent of the event, along with the directions of emergency services would dictate the actions of all parties involved

Version No.	Date of Issue	Authorised by	Page No.
0.1	11 August 2008	Head of Security	Page 29 of 29